

REVISTA OT CONFERENCE ISSUE



2021 TOTA ANNUAL CONFERENCE

Unmasking the Power of Occupation

NOVEMBER 5-6, 2021

HYATT REGENCY HOUSTON

2021 REGISTRATION IS LIVE!

Register TODAY >

THANK YOU TO OUR SPONSORS AND EXHIBITORS!

A LIMITED NUMBER OF EXHIBITOR BOOTHS ARE STILL AVAILABLE -
RESERVE YOURS NOW BEFORE THEY'RE GONE! [CLICK HERE >](#)

PLATINUM



SILVER



TEXAS STAR



CORPORATE PARTNERS



ADDITIONAL EXHIBITORS

Accurate Clinical Management
At Home Healthcare
Barrett Medical

Candi Creations
Center for the Healing of Racism
Cole Health
Ensign Services

Med Travelers
Naked Prosthetics
Neuro Rehab VR
Rehab Synergies

Sage Care Therapy
Soft Light Photography
University of Texas Medical Branch

Quick Reference Guide

Travel

Vonlane – Get 10% off using promo code TOTA 2021.

Hotel

Book early to secure lowest group rate.

Registration

Early bird rate through October 25.
No onsite registration.

Insurance

Inability to attend insurance is included with your conference registration.

Special Events

Keynote Speaker:
Cherry Steinwender
Wisdom and Wine: Philip J. Horner

Exhibitors

November 5: 11:30 - 4:00 PM
November 6: 11:00 - 4:00 PM

Educational Sessions

Select your sessions early to secure your seat.

Whova

Pre-Recorded / On Demand content available until December 31, 2021

Welcome to the Revista OT Annual Conference Issue.

Click on the above items to view more information.



2021 TOTA
ANNUAL CONFERENCE

Unmasking the Power of Occupation
NOVEMBER 5-6, 2021
HYATT REGENCY HOUSTON

Contents

- 5 | Letter from the President
- 6 | From the Executive Director
- 8 | Officers & Chairs
- 9 | 2021 TOTA Annual Conference
- 10 | Why You Need to Attend
- 11 | TOTA Conference History
- 12 | NEW THIS YEAR!
- 13 | Conference Registration
- 14 | Floorplan
- 15 | Special Events
- 16 | Poster Presentations
- 22 | Student Zone
 - Survey Results
 - Scholarship
 - EVENT: Let's Fiesta!
 - EVENT: Walk A Mile
- 25 | Walk a Mile in a Variety of OT Practitioners' Shoes
- 26 | Award Nominees
- 27 | Educational Sessions
- 33 | Student Organization Store
- 34 | Legislative Update
- 35 | District Beat
- 36 | PAC Pulse
- 37 | Second Servings
- 38 | Course Schedule



Revista OT is posted online three times a year by the Texas Occupational Therapy Association, Inc., 1106 Clayton Lane, Suite 516W, Austin, TX 78723.

Office Number: (512) 454-TOTA (8682)
email: judith.joseph@tota.org
Web: www.tota.org

REVISTA OT: Conference Issue



Proudly partnered with Second Servings. See page 37



Walk a Mile in a Variety of OT Practitioners' Shoes



**Saturday November 6, 2021
8:00 AM - 9:45 AM
Location: West Extended**

TOTA Annual Conference

Texas Occupational Therapy Association (TOTA) is the state's professional association of Occupational Therapists, Occupational Therapy Assistants, students of Occupational Therapy and retired Occupational Therapists. The primary mission of TOTA is to be responsive to the professional development, information needs, and educational requirements of its members; to advance and improve the practice of occupational therapy for the benefit of the consumers; and to anticipate and respond to the organizational, political, economic and social features of the health care delivery system at the local, state and national levels.

What is the TOTA Annual Conference?

The TOTA Annual Conference is the yearly educational conference and business meeting of the association. The annual conference provides the ideal place and time to promote your products/services to the OT community. On average over 600 Occupational Therapy Professionals and Students attend the annual conference.

Advertising: All advertising is accepted on the basis of conformity with the standards of TOTA, Inc., which reserves the right to refuse unsuitable ads. Rates can be obtained by calling the above number. Information is due the first of each month prior to publishing.

The Texas Occupational Therapy Association, Inc. is not responsible for statements made by contributors or advertisers. Unless otherwise stated, material published to Revista OT does not reflect the official position or endorsement of the Texas Occupational Therapy Association, Inc.

Letter from the President

Jason Stark, OT – TOTA President



Jason Stark, OT, MHA
TOTA President

I walked through the Hyatt Regency in downtown Houston where our 2021 conference, “Unmasking the Power of Occupation,” will be held. I was captivated by the venue and the recent remodeling that updated the look and the feel of a once outdated hotel. I appreciated the new sleek look of the hotel. It made me excited and exhilarated to think of what is to come in November. The feeling of anticipation that we often feel the first day of conference, the longing to reunite, network, meet new friends, and learn together, came back to me.

I see a direct correlation between the venue for conference and where TOTA is going. The pandemic has changed and remodeled TOTA much like the Hyatt Regency. We are now on the other side of the pandemic and, through the hard work of the Executive Director, TOTA did not miss a beat with our education offerings. We are reaching more occupational therapists than ever and providing quality continuing education through our new learning management system to professionals and students statewide.

The pandemic allowed for reflection to determine what TOTA can do to continue to serve our members beyond continuing education. We are in the process of determining how we can better serve students, first year practitioners, and every other member. I am excited to share this vision with all of you at conference. Our focus continues to be on servant leadership and determining what each of you needs so that we can be sure we are providing support and services to enhance the practice of occupational therapy.

TOTA board and staff have been working hard since we last met. We were very active in the legislative session introducing the compact legislation in both the senate

and the house of representatives. Be sure to attend the legislative session during conference to hear how TOTA worked throughout the session to advocate for you and the profession.

I cannot wait to be together again. I look forward to seeing your faces, hearing the laughter in the exhibit hall, and continuing to learn what it is that TOTA can do for you. Please find me at conference and tell me what TOTA can do for you or ask me what TOTA has done for you. I am here to serve each of you and want you to tell me what we can do for you on our journey together.

“The journey is never ending. There’s always going to be growth, improvement, adversity; you just got to take in all in and do what is right, continue to grow, continue to live in the moment.” —
Antonio Brown

Judith Joseph, Executive Director



Judith Joseph, OTR,
MA, CDRS, TOTA
Executive Director

TOTA is excited to reconvene the occupational therapy community for this year's 2021 Annual Conference in Houston. The past year demonstrated the value of occupation for our physical, mental, and emotional health. Through adversity, we, as a community, adapted, adjusted, modified, and continued our work as clinicians, educators, and students. This year's conference celebrates our resilience.

You may have noticed the change of venue from Sugar Land to the Hyatt Regency Houston. Our goal is to have a full, enriching, and safe experience for conference attendees, exhibitors, and employees. As an assembly of trained health-care professionals, our public adherence to scientific, medical, and health guidelines is critical, especially with regard to large indoor gatherings, social distancing, mask wearing, etc. Thus, we found it necessary to change our venue. We will continue to monitor local, state, and federal health guidelines as we get closer to November.

Our conference theme is Unmasking the Power of Occupation. Although the annual conference has transitioned from a three-day event to two days, we are planning a quality program that includes in-person educational sessions, poster presentations, and on-demand pre-recorded content. Using a virtual platform (Whova) we can offer more CEUs. The on-demand content will be available to registered attendees through December 31, 2021.

Another new feature we are introducing is "Inability to Attend" insurance through Rainprotection Insurance. Attendee registration Insurance is now included in your registration fees. If you are unable to attend the conference for a reason outside of your control and is

covered under the policy, you will receive a 100% refund. Coverage starts on the date you pay for registration and ends on the first date of the event. The details of this benefit can be found in this issue of Revista and on our website.

The keynote session will feature Mrs. Cherry Steinwender. Mrs. Steinwender is one of the founding members of the first Healing Racism organizations in the world, which began in 1989. She serves as Executive Director of The Center for the Healing of Racism in Houston, Texas. Cherry has received numerous awards and honors for her steadfast work in dismantling racism. Be sure to visit the Center's booth in our exhibit hall. If you prefer not to drive to downtown Houston, we have arranged a 10% discount to travel to and from Austin, San Antonio, Dallas, and Dallas Fort Worth, on the Vonlane Luxury Coach. You can enjoy ample workspace, complimentary Wi-Fi, extended seat recline, and exceptional attendant service.

We have pulled out all the stops for you, so put on your real clothes and join us live in Houston.

Best,

Judi



**A lab course for Physical,
Occupational and Speech
Therapists and Assistants.**

#329 Pediatric NDT Intensive Handling Techniques (15 Hours)

with **Gail Ritchie, OTR, C/NDT**

Houston (Porter), TX November 5-6, 2021

Killeen, TX Fri-Sat, December 3-4, 2021

Price: \$495/Groups of 5 \$395 each



Accredited provider



American
Occupational Therapy
Association

Approved Provider

www.MotivationsCeu.com

DOCTOR OF OCCUPATIONAL THERAPY (OTD)

A post-professional degree plan offering Bachelor's-to-OTD and Master's-to-OTD options

The program enables practicing OTs to complete a course of study that will prepare them to assume leadership roles, management positions, and/or to serve as clinical faculty.

The program is 100% online and can be completed in six to seven semesters while maintaining active clinical practice.

For more information please
contact us by email at
ppotd.admission@utmb.edu
or call **(409) 772-3062**



 **Health**
School of Health Professions

shp.utmb.edu/OccupationalTherapy



- 10% to 25% off Online Courses
- Serving OTs and OTAs Since 1996
- In a RUSH? Certificates FAST online, by email or mail
- Over 80 Approved Courses
- AOTA Approved Provider 6295



- ✓ FREE REGULAR SHIPPING WITHIN U.S.
- ✓ NO ANNUAL FEES
- ✓ NO MEMBERSHIP FEES
- ✓ EVERYDAY LOW PRICES
- ✓ MULTI-COURSE DISCOUNTS

CHOOSE TO TAKE YOUR COURSES:



CUSTOMER SERVICE AVAILABLE AT 1-866-257-1074
e-mail: info@OTcourses.com

Officers

President:
 Vice President:
 Secretary:
 Treasurer:

Jason Stark
 Laurie Stelter
 Adele Brunson
 Shari Felton

District Chairpersons

Alamo South:
 Capital Centex:
 Great Plains West:
 Gulf Coast East:
 Rio Grande:
 Trinity North:

Monica Starkovich Clark
 Giuli Krug
 Matthew Wymore
 Diane Collins
 Kaleigh Stevens
 Keegan McKay

Committee Chairs

Conference:
 Development:
 Education:
 International:
 Legislative & Political Affairs:
 Membership Services:
 Standards & Practice:
 Parliamentarian:
 AOTA Representative

Evie Harness
 Sharon Hennigan
 Susan Nickelson
 Evanglina Moncayo
 John Luna
 Elizabeth Holland Laurie
 Michelle Atanu
 Lynda Jennings
 Judy Robinson Skarbek
 William Sit
 Kelly Parmet
 Jennifer Sanchez-Morales (OT)
 Dulce Paredes (OTA)

OTA Representative
 Student Representatives

Newsletter

Editor:
 Design and Production:
 Executive Director
 Member Services
 Vendor Services
 Continuing Education Services
 Legislative Advisor

Legal Advisor

Jaclyn Low
 Justine Boyer
 Judith Joseph
 Heather Logan
 Kami Lusson
 Kami Lusson
 Denise Rose
 Kate Goodrich
 Richard Cheng



ADVANCING EDUCATION, RESEARCH, OUTREACH & FELLOWSHIP

The Texas Society for Hand Therapy seeks to promote the field of hand therapy through education, research, and fellowship. The members of the TSHT are occupational or physical therapists, many of whom have attained the Certified Hand Therapist designation, occupational or physical therapist assistants, students, physicians, or other professionals who are advocates of the field of hand therapy.

For more information, contact us at support@tsht.org or visit www.tsht.org.



SAVE THE DATE FOR THE 2022 ANNUAL EDUCATION CONFERENCE
"TAMING TISSUES WITH ISSUES"

APRIL 8-10, 2022
KALAHARI RESORT, ROUND ROCK, TEXAS

2021 TOTA Annual Conference- Unmasking the Power of Occupation

Evie Harness, OTR – TOTA State Conference Chair



Evie Harness, OTR,
TOTA State
Education Chair

We are so excited to resume in-person conferences again! Although last year's virtual conference was a great success, we missed seeing everyone. We understand that, even as things continue to "open up," there may be lingering discomfort in mixing and mingling with a crowd. We assure you that **the hotel and TOTA are focused on your safety throughout the conference.** The conference committee is diligently reviewing processes and modifying some of them to minimize contact. Check-in for conference will include minimal items. Attendees will be able to pick up their own conference bags and ribbons. We will even have different colored wrist bands available so you can identify your personal comfort level with socialization. The red band stands for "I still need some distance;" Yellow means "Come on in for a fist or elbow bump;" and green means "Bring on the hug!" It will be your preference.

While we originally planned to hold the 2021 conference at the Sugar Land Marriott, that venue was a capacity challenge even before the pandemic. With adjusted capacity limitations due to social distancing in the presentation rooms, we suspected there would not be sufficient seating available. Our new venue for the 2021 conference is the Hyatt Regency Houston in the heart of Houston. The square footage in the presentation rooms at this location enables us to have more seating available while following current social distancing guidelines. **Because there will be some capacity limitations, make sure to register as soon as you can** to secure a seat at the courses.

For those of you who hate to drive, the Hyatt also has **door-to-door service available using the Vonlane Luxury Motor Coach Service.** This service offers a first-class cabin, complimentary snacks, complimentary Wi-Fi, satellite TV, and on-demand video entertainment all while someone else deals with the traffic. The service is available from Dallas, Austin, Fort Worth, and San Antonio. Vonlane is offering a 10% discount for our event.

Our 2021 conference will be a two-day live event plus the addition of access to pre-recorded sessions available to attendees through the end of the year. The two-day format resulted in shifting of days/ times of some regular program events. For example, the awards ceremony will now be held on Friday instead of Saturday night. Be sure to familiarize yourself with the program schedule to ensure you can participate in all the events. You will once again be

able to browse the exhibit hall and chat with the vendors in person. SOTA tables and posters will also be conveniently located in the exhibit hall.

Our 2021 Key-Note speaker is **Cherry Steinwender, Executive Director of the Center for Healing Racism in Houston, Texas.** She is the author of *Bread is a Simple Food, Teaching Children About Cultures*, We are sure her presentation will offer an important and poignant message for these times.

Again, we look forward to seeing everyone again.
See you in Houston!

Many thanks to the hard-working conference committee team for their efforts and the many hours spent pulling this event together.

2021 Conference Committee

Overall Coordinator/ Executive Director	Judi Joseph
State Conference Chair	Evie Harness
Marketing, Registration, Conference App	Heather Logan
Exhibits	Kami Lusson
Program Chair	Jean Polichino
Education	Susan Nickelson
Hospitality Chair/ Volunteer Coordinator	Brittney Burton
Awards	Elizabeth Laurie
Student Events	Jennifer Sanchez-Morales
Student Registration	Terri Powers
TOTF Research Forum, TOTF CE Event	Francie Baxter
IT Consultant	Eileen Garza
Guest OT Conference Consultant	Gwen Morris

Why You Need to Attend the TOTA Annual Conference

Susan Nickelson, OTR, OTD – TOTA Education Chair



Susan Nickelson,
OTR, OTD,
TOTA Education Chair

I hope you have been enjoying all the incredible continuing education (CE) opportunities that TOTA has been offering in 2021—including this November's 2021 TOTA Annual Conference!

As with many other things in the past year, TOTA has also changed with the times and given our members more flexibility in how they can earn CE credits. It has never been easier to learn when and where is the most convenient for you.

Conference attendees will not only be able to attend courses from our live conference schedule, but will also be able to access our Conference On Demand Only courses through the Whova app. These On Demand courses will only be available to conference attendees through December, so make sure to check them out before it is too late.

TOTA has also continued to offer FREE, quality CE virtual events for members thanks to our education committee volunteers at the district level and through TOTA's statewide offerings. These virtual events can be attended at the time of the presentation or the recordings can be watched later through the TOTA Learning Management System (LMS). Either way, you have easy options to earn CE credits needed for your TBOTE or NBCOT renewals through our TOTA events. If you missed any of the live events hosted by a TOTA district or the Diversity, Equity, and Inclusion Ad Hoc Committee this year, there were some incredible speakers and great content you will not want to miss that are still available in our LMS!

Make sure to watch the TOTA website for both TOTA Featured Courses and other TOTA pre-approved continuing education courses. Just like our TOTA events, these providers have taken the extra step

to submit courses to TOTA for review and approval by our volunteer CE reviewers. TBOTE reviews the TOTA CE Approved Provider Programs periodically to ensure that our processes are stringent and our reviewers are qualified content experts. When you select courses that have been pre-approved by TOTA, you can be assured that the course will be accepted during a TBOTE audit.

Remember that, as TOTA members, **all district continuing education events are free to you**, whether virtual, recorded, or in-person. In addition, TOTA members may also be offered discounted rates for statewide events and pre-approved CE courses on our website.

When you join TOTA or renew your membership, you not only get access to these great member benefits, but you also help support TOTA in providing Texas OT practitioners with the high-quality CE needed to support evidence-based practice.



TOTA Conference History

Esther Bell & Kathlyn Reed – TOTA Ad Hoc History Committee

Conferences can be a reflection of a profession at the time they occur. The history of conferences is a vital piece of the history of the profession and the professional association. TOTA has had at least one conference annually since 1936 except for four years. Conferences included continuing education sessions, a business meeting and often an exhibit. Initially, quarterly conferences were attempted but were changed to semi-annual and then annually.

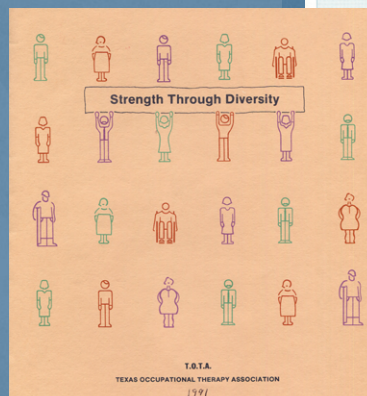
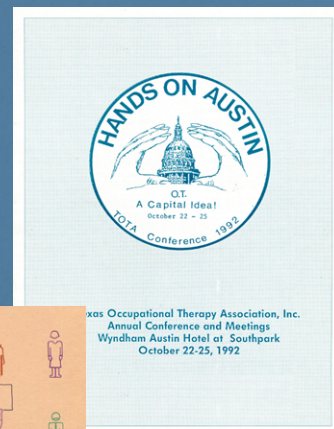
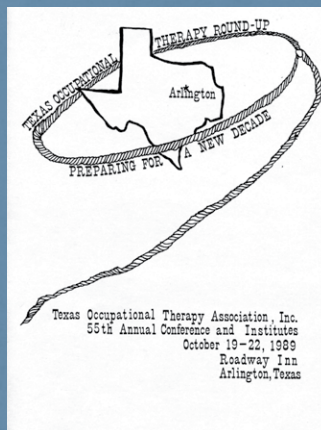
Three of the four years in which no conference was held occurred during World War II because the U.S. government restricted travel to conserve fuel for the war effort. The other missed year occurred when time and energy were directed to preparing for the 1969 AOTA conference.

Speakers at early conferences focused on topics related to tuberculosis, neuropsychiatry (mental health) and pediatric orthopedics (polio and cerebral palsy) because most practitioners were employed in one of those three areas. The primary speakers were physicians in the early years, but beginning in the 1950s, occupational therapy practitioners became the dominant speakers. Topics related to physical medicine and rehabilitation were first on the conference program in 1948.

Early conferences were held in conjunction with the Texas Hospital Association (THA). TOTA members were encouraged to attend sessions sponsored by THA as well as TOTA presentations, thus expanding topics available to TOTA members. Exhibits consisted of craft items completed by patients in occupational therapy sessions to better acquaint physicians with occupational therapy services. Not until the 1950s did exhibits include vendors interested in selling equipment and supplies to occupational therapy personnel.

During the 1950s and 1960s, the shortage of qualified occupational therapy personnel in Texas and nationwide was a recurring topic. Recruitment and education of potential practitioners were emphasized. At that time, Texas had only one educational program. It was offered at the Texas State College for Women (now Texas Woman's University). As the number of educational programs increased in the 1980s, presentations on personnel shortages decreased.

In 1950, TOTA began holding conferences without involvement of other organizations. Conferences were held in various cities across the state to provide easier access for more TOTA members. The length of conferences expanded from one day to three and the number of presentations increased. Multiple sessions were presented at the same time, further increasing the number of available sessions. The range of topics expanded to reflect the changes in practice settings, especially in the areas of physical disability in adults, school-based settings, and technology. However, the focus remained the same – to provide opportunity for practitioners to share ideas and knowledge and to provide a platform to promote the practice of occupational therapy throughout the state of Texas.



New This Year

+ **Inability To Attend Insurance** Is Now Included With Your 2021 TOTA Conference Attendee Registration

You will receive a 100% refund of your registration fees, if you are unable to attend conference due to a reason covered under the policy.

[LEARN MORE >](#)

+ **New Conference Venue with Extra Spacing**

Located in the heart of Uptown Houston, The Hyatt Regency Houston provides a beautiful meeting venue with plenty of space for attendees to spread out. Register for your courses as soon as you can to secure your seat.

+ **Stay at the newly renovated Hyatt Regency Houston**

Enjoy spectacular views of downtown Houston, a dedicated shuttle, and close proximity to museums, Minute Maid Park, and the George R. Brown Convention Center.

Dedicated booking link. Group rate as low as \$169 per night (Limited group rate rooms available).

[BOOK NOW >](#)

+ **Travel in Style with Vonlane**

Travel in first class and let someone else do the driving. Arrive at the door of the Hyatt Regency Houston. **Use code: TOTA2021 and get 10% OFF** when booking online, or calling 844-VONLANE (844-866-5263)*

+ **No Onsite Registration**

Due to Covid precautions, there will be no onsite registration. Regular registration will end on October 25. Late registration fees will be applied from Oct. 26 - Nov. 2.

[REGISTER >](#)

+ **Streamlined Checkin**

The health and safety of our members is paramount.

+ **Socialization Comfort Level Wristbands**

Red, yellow, and green wristbands will help everyone identify personal comfort level for socialization.

+ **Live + Virtual Opportunities**

Two-day in-person event as well as virtual access to pre-recorded sessions until December 31, 2021.

*Vonlane will open it's November departure schedule for booking soon. Once their schedule is open for booking, attendees may use the TOTA2021 discount code to book travel to the TOTA Annual Conference.

EARLY BIRD REGISTRATION ENDS ON SEPTEMBER 30. REGISTRATION FEES INCREASE BY \$50 STARTING OCT. 1- OCT. 25TH. LATE REGISTRATION OCT. 26TH -NOV. 2. NO ONSITE REGISTRATION.

TOTA Annual Conference Registration

Register early & SAVE!!

2021 TOTA Annual Conference Registration Fees

	Early Bird Pricing ENDS SEPTEMBER 30!		Registration (+\$50) October 1- October 25		Late Registration (+\$100) October 26 - November 2	
	Member	Non-Member	Member	Non-Member	Member	Non-Member
Practitioner Full Conference	\$307	\$420	\$357	\$470	\$407	\$520
Practitioner Friday Only	\$182	\$235	\$232	\$285	\$282	\$335
Practitioner Saturday Only	\$182	\$235	\$232	\$285	\$282	\$335
Student Full Conference	\$172	\$202	\$222	\$252	\$272	\$302
Practitioner Friday Only	\$99	\$129	\$129	\$179	\$199	\$229
Practitioner Saturday Only	\$99	\$129	\$129	\$179	\$199	\$229

Exhibit Hall Hours

Friday, November 5 11:30 AM – 4:00 PM
 Saturday, November 6 11:00 AM – 4:00 PM

Inability to Attend / Cancellation Policy [PLEASE READ]

Attendee registration insurance is now included in your conference registration.

This coverage is underwritten by Lloyds of London. You will receive a 100% refund, if you are unable to attend the event for a reason outside of your control that is covered under the policy. This coverage starts on the date you pay for your registration and ends on the first date of the show. [CLICK HERE](#) to view our claims website and then click on the tab Policy Terms & Conditions for full details. **The Texas Occupational Therapy Association will not provide refunds if you are unable to attend the TOTA Annual Conference.**

Continuing Education Credit

TOTA will provide an attendance reporting form for all webinars/sessions which have been approved for credit. **The CE tracker will be in the whova app and available for downloading.** Note: We will not be recording any of the live educational sessions or special events. There will only be live sessions and on-demand sessions that were pre-recorded. The on-demand CE hours will make up for the hours you would have gained by attending conference on Sunday.

Tri-Alliance Members, Health Care

Professionals and Out-of-State OTs / OTAs Registration will be at the TOTA member rate with proof of current professional state association membership.

What's Included?

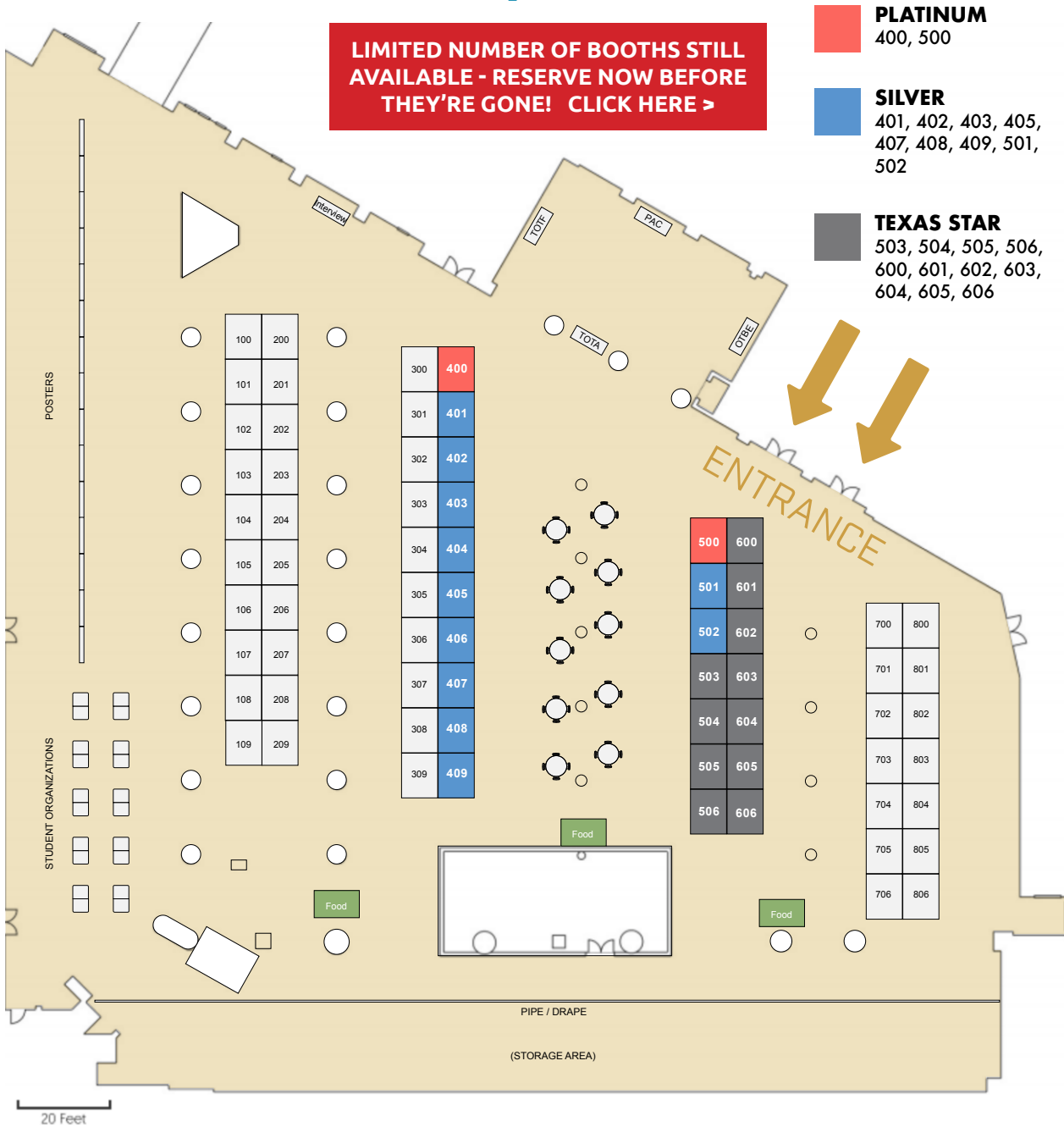
- Access to over 80 CEU hours.
- LIVE courses of your choice PLUS access to the pre-recorded sessions available through December 31, 2021.
- Full access to the Exhibit Hall, product demos, interviews, live meetings.
- Networking opportunity within the virtual platform and app
- Low-cost professional headshots available by Softlight Photograph.
- Registration also includes boxed lunches, coffee and refreshment breaks.

Visit the TOTA website at: www.tota.org

**REGISTER BY
 November 2, 2021.**

CLICK HERE TO REGISTER NOW!

Exhibitor Floorplan



PLATINUM SPONSORS

RiverKids Pediatric Home Health
Therapy 2000

SILVER SPONSORS

Baylor University Occupational Therapy
Ricky Knowles Hair and Wellness
SimplePractice

TEXAS STAR SPONSORS

Circle of Care
Hanger Clinic
MedCare Pediatric Group
Pathfinder Pediatrics Home Care, Inc.
Specialized Assessment and Consulting
Texas Woman's University
Thrive Skilled Pediatric Care

ADDITIONAL EXHIBITORS

Accurate Clinical Management
At Home Healthcare
Barrett Medical
Candi Creations
Center for the Healing of Racism

Cole Health
Ensign Services
Med Travelers
Naked Prosthetics
Neuro Rehab VR

Rehab Synergies
Sage Care Therapy
Soft Light Photography

University of Texas Medical Branch

CORPORATE PARTNERS

Brain FX
KidsCare Home Health Texas
Society of Hand Therapy

Special Events

FRIDAY, NOVEMBER 5

FRIDAY – 8:00 AM – 4:00 PM

Poster Presentations

FRIDAY – 11:00 AM – 4:00 PM

Exhibit Hall Open

FRIDAY – 12:00 PM - 1:00 PM

Lunch in the Exhibit hall

FRIDAY – 3:00 PM - 4:00 PM

Refreshment Break in the Exhibit hall

FRIDAY – 6:30PM - 7:15 PM

TOTA 2021 Awards Ceremony

[It's not too late: CLICK HERE TO NOMINATE an outstanding TOTA member>](#)

FRIDAY – 7:15 PM - 8:30 PM

Let's Fiesta! (Student Event)

SATURDAY, NOVEMBER 6

SATURDAY – 8:00 AM – 9:45 AM

Walk a Mile in a Variety of OT Practitioners' Shoes (Student Event)

SATURDAY – 8:00 AM – 4:00 PM

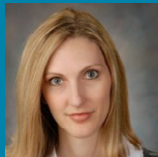
Poster Presentations

SATURDAY – 11:00 AM -4:00 PM

Exhibit Hall Open

SATURDAY – 10:00 AM -11:00 AM

TOTA Business Meeting



WILL YOU BE OUR NEXT WINNER?

Autumn Clegg was the door prize winner of a conference registration at the 2020 Business Meeting.

AGENDA

- Welcoming Remarks
- Introduction of Board Members
 - State Board Members
 - District Chairs and Boards
 - 2021 TOTA Annual Conference Committee
- Quorum consists of the number of voting persons present at this meeting
- Adoption of Rules of the Day
- Adoption of the Agenda
- Adoption of 2020 Minutes
- Appointment of 2021 Minutes Review Committee
- Verbal Highlights of the following Reports
 - President
 - Treasurer
 - Executive Director
- New Business (Any items of business arising from the floor shall be referred to the Board for action.)
- Report of Nominating Committee for 2021 election and Call for 2022 Candidates
- Swearing in of New Officers
- Annual Awards Announcement
- Drawing Winners and Closing Comments
- Adjournment of Annual Business Meeting

SATURDAY – 11:00 AM – 12:00 PM

Keynote Speaker

Cherry Steinwender

Co Executive Director at Center Healing Racism

Mrs. Cherry Steinwender is one of the founding members of the first Healing Racism organizations in the world, which

began in 1989. She serves as Executive Director of The Center for the Healing of Racism in Houston, Texas. She is the author of the book "Bread is A Simple Food, Teaching Children about Cultures". Mrs. Steinwender is increasingly called upon for information, consultation, and seminar bookings both nationally and internationally. Over the last fifteen years, she has worked with delegations of dignitaries from at least 50 countries which include Africa, South Asia, Europe, and Brazil. The Center serves as a resource for the guest visitors entering the country through the USA State Department seeking knowledge about the American brand of racism. Cherry has received numerous awards and honors for her steadfast work in dismantling racism. Her life is one of service and she tirelessly contributes in schools with the youngest of our youth to the oldest.



SATURDAY – 12:00 PM - 1:00 PM

Lunch in the Exhibit hall

SATURDAY – 3:00 PM - 4:00 PM

Refreshment Break in the Exhibit hall

SATURDAY – 7:15 PM – 8:30 PM

TOTA President's Reception (Invitation Only)

SATURDAY – 4:00 PM – 6:00 PM

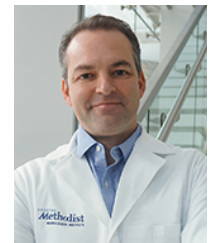
TOTF Wisdom

NOTE: \$60 extra fee

Philip J. Horner, PhD

Professor of Neuroregeneration, Academic Institute Scientific Director, Center for Neuroregeneration Houston Methodist, Weill Cornell Medical College

Philip J. Horner, Ph.D., received a Ph.D. in physiology from Ohio State University in 1995. He did post-doctoral training with Dr. Fred H. Gage and became a staff scientist in the Lab of Genetics at the Salk Institute in 1998. In 2001, Dr. Horner joined the faculty of the Department of Neurological Surgery at the University of Washington in Seattle. He directed a laboratory at the UW South Lake Union Campus and was a member of the Institute for Stem Cell and Regenerative Medicine. In 2015, Dr. Horner became the Scientific Director of the Center for Neuroregenerative Medicine and the Co-Director, Center for Regenerative and Restorative Neurosurgery at the Houston Methodist Research Institute in Houston Texas. Dr. Horner's research focuses on the role of glial and neural progenitor cells in the regeneration of the injured and aging nervous system.



Poster Presentations

Presentation times will be posted on the posters and within the whova app.
Friday and Saturday: All posters will be available 8:00 AM -4:00PM

FRIDAY, 8AM - 12PM Improving Knowledge and Application of Strategies for Executive Functioning

Tina Pulley, OTD, OTR

Course Level: Entry Level

Presentation Type: Poster

Category: Children and Youth

Course Length: .25 hrs.

This poster details the author's evidence-based occupational therapy (EBOT) capstone design and outcomes. The project is based on the need for improved educator knowledge of executive functioning and how a lack of EF skills affects students in the classroom. Outcomes of the project are presented.

FRIDAY, 8AM - 12PM Rahab's Retreat and Ranch

Julie Hebert, OTD, OTR

Deanna Scapperotti, COTA

Mallory Moore, COTA

Jessica Davis, COTA

Heather McCown, COTA

Anthony Gustamantes, COTA

Hannah Sykora, COTA

Course Level: Entry Level

Presentation Type: Poster

Category: Children and Youth

Course Length: .25 hrs.

A needs assessment was conducted and determined that a sensory room could be beneficial for the children at Rahab's Retreat and Ranch. This project was an innovative opportunity to promote the skilled knowledge base of occupational therapy while decreasing behaviors through sensory integration.

FRIDAY, 8AM - 12PM Use & Effectiveness of NMES in OBPP: Survey Among Occupational & Physical Therapists

McKenzie Collins

Eleni Dimopoulos

Emily Jones

Sivan Louria

Vicky Vu, MA, OT/L, MBA, BCP, CNT

Course Level: Advanced

Presentation Type: Poster

Category: Research

Course Length: .25 hrs.

The purpose of this cross-sectional survey study was to analyze the effectiveness of NMES as a conservation intervention for children with OBPP. The results found after assessing pre and post AMS scores, from occupational and physical therapists, suggests NMES is effective.

FRIDAY, 8AM - 12PM Lumbar Multifidus Cross-sectional Area and Low Back Pain in Healthcare Workers

Robert E Larson, OTR, PhD

A Wayne Johnson, PT, PhD

Irike H Mitchell, PT, PhD, FAAMOPT

Course Level: Entry Level

Presentation Type: Poster

Category: Research

Course Length: .25 hrs.

Allied Health Professionals experience high rates of low back pain. One factor in this trend may be lumbar multifidus atrophy. This observational research assesses the relationship between multifidus cross-sectional area and low back pain in occupational therapists and other healthcare workers.

FRIDAY, 8AM - 12PM Intentional Resiliency Club: A Program to Reduce OT Student Stress and Build Resiliency

Ana K. Brussa, MS, OTR

Course Level: Entry Level

Presentation Type: Poster

Category: Mental Health

Course Length: .25 hrs.

The Intentional Resiliency Club is a health promotions program based on

the Intentional Relationship Model developed to help OT students identify and then respond with resiliency to the clinical and interpersonal dilemmas they may encounter during fieldwork experiences.

FRIDAY, 8AM - 12PM Exploring the Perceived Value of Role-Emerging Level I Fieldwork

Amy Boyd, OTD, OTR

Course Level: Entry Level

Presentation Type: Poster

Category: Education

Course Length: .25 hrs.

Post-Professional Capstone project that explored the perceived value of a supported psychosocial, role-emerging, Level I fieldwork for both first-year occupational therapy students and the role-emerging sites.

FRIDAY, 8AM - 12PM Homelessness and Development of a Trauma-Informed Care Toolkit

Sue Ram, OTD, OTR

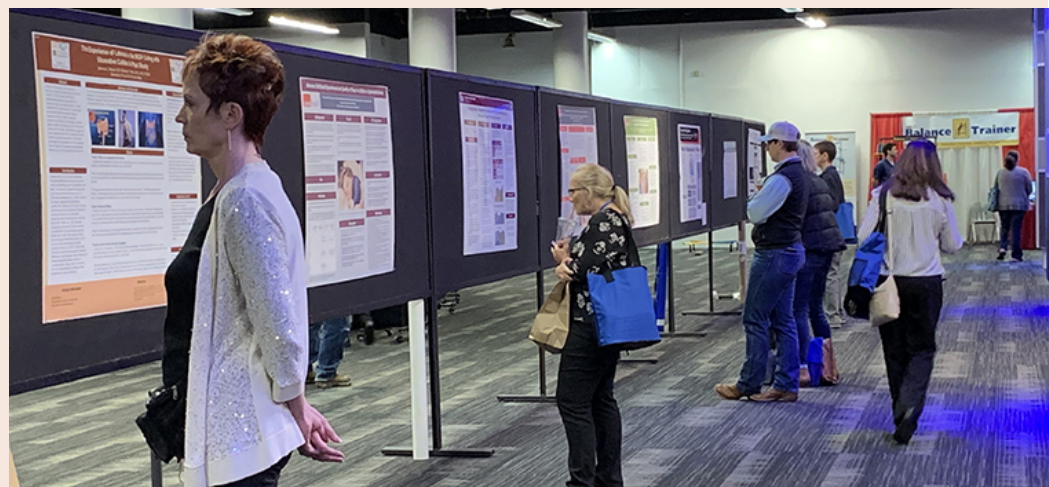
Course Level: Entry Level

Presentation Type: Poster

Category: Mental Health

Course Length: .25 hrs.

During 2019 there were 7028 individuals experiencing homelessness in Cincinnati. A need for formal trauma-informed care was identified by Bethany House, a family shelter. Our team developed a trauma-informed care toolkit which can be utilized by the staff of the Bethany House shelters.



Poster Presentations

FRIDAY, 8AM - 12PM **Single-Hispanic Mothers** **Experience Raising Children** **with Down Syndrome**

Caila Summer Smith
John S. Luna, OTR, OTD
Course Level: Entry Level
Presentation Type: Poster
Category: Children and Youth
Course Length: .25 hrs.

This presentation explores the experiences of single Hispanic mothers raising young children with Down syndrome. Findings may enhance practitioner's knowledge of contextual considerations during the evaluation process to promote family centered intervention for children and youth.

FRIDAY, 8AM - 12PM **Nontraditional or Home** **Programming on ADL Performance** **in Persons Living with MS**

Amanda Hajare
Shelby Rogers
Kimberlyn Belveal, Stephanie Gunkel,
Alexandra Lambropoulos, Claudia Hilton,
PhD, OTR, MBA, FAOTA, Amber Armstead,
DrPH, OTR, BCPR
Course Level: Intermediate
Presentation Type: Poster
Category: Research
Course Length: .25 hrs.

The purpose of this systematic review is to examine research on the effects of nontraditional or home-based interventions on ADL performance for individuals with multiple sclerosis (PLMS). This review aims to highlight the strong levels of evidence of nontraditional and home-based programming.

FRIDAY, 8AM - 12PM **PromOTing Intraprofessional** **Collaboration within OT/OTA** **Programs**

Justine Faghihifar, OTD, OTR
Julie Herbert, OTD, OTR
Gloria J. Jeffery, OTR
Course Level: Intermediate
Presentation Type: Poster
Category: Education
Course Length: .25 hrs.

Attendees will gain knowledge and exposure to the collaboration and development of "intra" professional learning opportunities, at program levels, for students of OT and COTA schools.

FRIDAY, 8AM - 12PM **Occupational Therapy** **Contributions During Stem Cell** **Transplant and CAR-T/NK**

Ashley Gurney, OTR, MOT
Course Level: Entry Level
Presentation Type: Poster
Category: Rehabilitation Disability and Participation
Course Length: .25 hrs.

This course serves to educate practitioners on the role of occupational therapy during stem cell transplant and the emerging role of occupational therapy during chimeric antigen receptor t-cell/natural killer cell infusion (CAR-T/NK).

FRIDAY, 8AM - 12PM **Unraveling the Power of** **Occupational Identity Through** **an OT's TBI Journey**

Amanda Grigg, MS, OTR
Andi Brown, MS, OTR
Devin Barth, MS, OTR
Course Level: Intermediate
Presentation Type: Poster
Category: Rehabilitation Disability and Participation
Course Length: .25 hrs.

This presentation will explore the concepts of occupational identity formation, disruption, and reconstruction. Attendees will identify ways to address occupational identity in practice, emphasizing collaboration with patients to develop person-specific, meaningful goals and interventions.

FRIDAY, 12 - 4PM **Innovative Practical Parkinson's** **Techniques to Address Physical/** **Mental Health**

Julie Hebert, OTD, OTR
Ashley Meador, COTA, OTS
Course Level: Entry Level
Presentation Type: Poster
Category: Rehabilitation Disability and Participation
Course Length: .25 hrs.

The focus of this workshop is to provide Occupational therapists with a Parkinson's tool kit which will consist of evidence-based Parkinson's techniques and ideas designed to assist and address the physical and mental health of individuals with Parkinson's.

FRIDAY, 12 - 4PM **The Utility of IRM Principles to** **Build Relationships w/in** **Classroom Communities**

Justine Faghihifar, OTD, OTR
Shaelyn Harris
Course Level: Entry Level
Presentation Type: Poster
Category: Education
Course Length: .25 hrs.

This poster depicts the rationale and procedure for investigation of the Intentional Relationship Model's constructs as they apply to classroom relationship building. It indicates findings, student comments and future directions for additional study.

FRIDAY, 12 - 4PM **Introduction to Targeted** **Muscle Reinnervation (TMR)** **for Therapists**

Bambi Lombardi, OT
Pamela Gibson, LCPO
Course Level: Entry Level
Presentation Type: Poster
Category: Rehabilitation Disability and Participation
Course Length: .25 hrs.

Targeted muscle reinnervation (TMR) is a surgical technique that has greatly improved the quality of life of patients with upper limb amputations. TMR can reroute damaged nerves or nerves cut during amputation which decreases painful neuroma formation and reduces phantom pain.

FRIDAY, 12 - 4PM **The Effective Seating & Positioning** **to Optimize Occupational** **Performance in the School**

John S. Luna, OTR, OTD
Susan Stills, OTR, OTD; Karel Dokken
OTR, OTD
Course Level: Entry Level
Presentation Type: Poster
Category: Children and Youth
Course Length: .25 hrs.

This poster will increase practitioners' understanding of the impact of one-size-fits-all furniture on student positioning. The presentation will provide strategies to identify/improve positioning across educational environments, and ideas to enhance collaboration with teachers and administration.

Poster Presentations

FRIDAY, 12 - 4PM

Does Virtual Reality and Video Gaming Improve Social Skills in Autistic Individuals?

Christopher Garcia

Hannah Juenke

Morgan Standiford, Brittany Horowitz, Breighana Naiser, Claudia Hilton, PhD, OTR, Diane Collins, PhD, OT

Course Level: Entry Level

Presentation Type: Poster

Category: Rehabilitation Disability and Participation

Course Length: .25 hrs.

Virtual reality and video gaming technologies have been shown to improve social skill in autistic individuals. This review synthesizes current literature to outline best use of these technologies and the role they in occupational therapy interventions for autistic individuals.

FRIDAY, 12 - 4PM

Internet-Connected Assistive Devices, Occupations, and Neurological Disorders

Grace S. Chang

Lucy T. Banh

Sally Yeung; Diane M. Collins, OT, PhD;

Abbas H. Quamar, PhD, CRC

Course Level: Entry Level

Presentation Type: Poster

Category: Rehabilitation Disability and Participation

Course Length: .25 hrs.

This systematic review examined current evidence on the impact of internet-connected assistive devices (iCADs) in facilitating occupations for adults ages 18-65 years with neurological disorders. Smart devices such as smartphones, tablets, laptops, and apps define iCAD for this review.

FRIDAY, 12 - 4PM

Student Connectedness During the Pandemic and its Impact on Academic Performance

Amber Armstead, DrPH, OTR, BCPR

Diane M. Collins, PhD, OT

Patricia Fingerhut, PhD, OTR; Karthik

Mani, OTD, OTR; Loree Pryor, OTD, OTR

Course Level: Entry Level

Presentation Type: Poster

Category: Education

Course Length: .25 hrs.

The purpose of this poster is to examine graduate occupational therapy student's individual perceptions of

connectedness with their classmates relate to their success in the entry-level occupational therapy program.

FRIDAY, 12 - 4PM

Children's Village at Tyler

Marissa Cabaza, COTA

Alyssa Wimberley, COTA

Kristen Fairchild, COTA; Bethany Duncan,

COTA; Miranda Garza, COTA; Hunter

Coker, COTA

Course Level: Entry Level

Presentation Type: Poster

Category: Education

Course Length: .25 hrs.

Sensory experiences were developed for children at Children's Village, a non-profit foster home, by placing sensory-based activities in play areas throughout the home with the goal of promoting social participation, emotional regulation, and sensory integration needed for health and well-being.

FRIDAY, 12 - 4PM

Building Self-Efficacy to Promote Occupational Engagement in Youth with Mental Illness

Sherry Thomas

Maddie LeGrange

Course Level: Entry Level

Presentation Type: Poster

Category: Mental Health

Course Length: .25 hrs.

The Waco Center for Youth is a facility that helps adolescents with mental illnesses and behavioral issues. The desired outcome of this project is to use rhythmic drumming and movement to build self-efficacy in these children to increase their engagement in meaningful occupations.

FRIDAY, 12 - 4PM

CAMP V

Karina Henriquez, COTA, OT/S

Annie Thomas, COTA, OT/S

Katelyn Thomas, Catherine Le, Amanda

Jerge, Cara McDonald

Course Level: Entry Level

Presentation Type: Poster

Category: Mental Health

Course Length: .25 hrs.

A sensory room at CampV was designed to provide a sensory-sensitive environment for veterans. By creating a sensory room at CampV, the veterans have an opportunity to engage in meaningful occupations to promote sensory and emotional regulation to assist in coping mechanisms.

FRIDAY, 12 - 4PM

Long-term Effects of Equine-Assisted Therapy (EAT) for an Adult Living with Cerebral Palsy

Molly Finneran

Elisa Michaud-Hanson, OTR, PA-C

Amber B. Armstead, DrPH, OTR, BCPR

Course Level: Entry Level

Presentation Type: Poster

Category: Research

Course Length: .25 hrs.

This case study follows an adult living with cerebral palsy who engages in long-term equine-assisted therapy (EAT). EAT interventions combine equitation skills with targeted exercises to meet meaningful occupational goals. EAT improved the participant's mobility, independence and quality of life.

FRIDAY, 12 - 4PM

Development of an Education Program for Practitioners Working with Brain Injury Survivors

Kaleigh Stevens, OTD, OTR, CBIS

Course Level: Entry Level

Presentation Type: Poster

Category: Rehabilitation Disability and Participation

Course Length: .25 hrs.

Results of a needs assessment conducted among therapists revealed an interest in treatments and resources related to community mobility. The presentation outlines a program developed to address this need, the results of program implementation, and possibilities for program revision.

Presentation times will be posted on the posters and within the whova app.

Friday and Saturday:
All posters will be available
8:00 AM -4:00PM

Poster Presentations

SAT., 8AM - 12PM

Caregiver Perceptions on Use of Telehealth to Address Care Challenges

Elizabeth Horne, OTD

Laura Novak, OTD, OTR, BCG; Carole White, PhD, RN, FAAN, and Ana Allegretti, PhD, OTR, ATP

Course Level: Entry Level

Presentation Type: Poster

Category: Research

Course Length: .25 hrs.

This study explores the perceptions of caregivers of persons living with dementia who participated by telehealth in a program which uses targeted occupational engagement to address care challenges. Positive experiences suggest telehealth may be an effective method for program delivery.

SAT., 8AM - 12PM

Romantic Interactions in Young Adults with Autism

Noemi Saenz

John Luna, OTR, OTD

Course Level: Entry Level

Presentation Type: Poster

Category: Rehabilitation Disability and Participation

Course Length: .25 hrs.

The purpose of this presentation is to explore the lived experiences that young adults with Autism have regarding their romantic interactions, especially the successes and challenges that may be beneficial in developing meaningful relationships with potential partners of interest.

SAT., 8AM - 12PM

The Child Assessment of Self Care: Development and Refinement

Amy Gibbs, OTR, MOT, CEIM

Patricia Bowyer,

EdD, M.S., OTR, FAOTA, SFHEA

Course Level: Intermediate

Presentation Type: Poster

Category: Research

Course Length: .25 hrs.

The purpose of this two-part qualitative action research with emergent design was to determine the wording and final items for the Child Assessment of Self-care (CAS), a child's self-report of self-care addressing the Model of Human Occupation (MOHO) construct of occupational adaptation.

SAT., 8AM - 12PM

Sexual Intimacy in Person's with Amyotrophic Lateral Sclerosis and Their Partners

Victoria Ramirez, OTD

Autumn Clegg, EdD, OTR

Carlayne E. Jackson, MD, FAAN

Pamela Kittrell, MSN, RN, CCRC.

Ana Allegretti, PhD, OTR, ATP

Course Level: Entry Level

Presentation Type: Poster

Category: Research

Course Length: .25 hrs.

This descriptive study explored concerns related to sexual intimacy and how to address this subject for Persons with ALS (PALS) and their partners.

SAT., 8AM - 12PM

Student Emotional Intelligence and Fieldwork Success: A Possible Factor?

Terri Grundy MOT, OTR

Katie Toon MOT, OTR, CLT, STAR/C

Katelyn Brady,

OTD, OTR/L Assistant Professor, AFWC at St. Catherine University

Alyssa Farrell,

MS OTR/L Assistant Professor, AFWC at St. Catherine University

Kimkesia Morgan,

MS, OTR/L, Assistant Professor, AFWC at St. Catherine University

Course Level: Entry Level

Presentation Type: Poster

Category: Education

Course Length: .25 hrs.

The correlation of emotional intelligence and success for OT and OTA students during Fieldwork II has been minimally explored but has shown to be positively linked. To better understand this relationship, this preliminary review of current research is designed to lay a framework for further studies.

SAT., 8AM - 12PM

Diversity in OT: Recruitment and Admissions Trends in an Occupational Therapy Program

Riqiea Kitchens, PhD, OTR, BCPR, CSRS

Course Level: Entry Level

Presentation Type: Poster

Category: Education

Course Length: .25 hrs.

Black/African-Americans are under-represented in occupational therapy (OT). This study examined patterns of recruitment and admission of Black/

African-American students in an entry-level OT program from 2015-2020. Results will inform future diversity efforts in OT education.

SAT., 8AM - 12PM

Use of Harmonica for Breath Support with Respiratory Patients in a Group Setting

Esmeralda Lizcano, OTR MOT

Jonathon Silbert, MT-BC, NMT Fellow;

Andrea Parker, OT student

Course Level: Entry Level

Presentation Type: Poster

Category: Rehabilitation Disability and Participation

Course Length: .25 hrs.

This course will introduce the collaborative approach to breath support with the use of the harmonica, music therapy, and occupational therapy.

SAT., 8AM - 12PM

The Effectiveness of IP Education on Self-Efficacy Among OT, PT & Nursing Students

Alicia F Lohmann, OTD, MOT, OTR, CBIS, ATP

Rebecca K. Aulbach, PhD, RN, ACNS-BC

Wayne A. Brewer, PT, PhD, MPH, OCS, CSCS;

Stacey Flynn, PT, DPT, CWS; Teresa

Maharaj, PhD, RN

Course Level: Intermediate

Presentation Type: Poster

Category: Education

Course Length: .25 hrs.

The Effectiveness of Interprofessional Education on Self-Efficacy Among OT, PT, and Nursing Students. Interprofessional collaboration amongst faculty from conception to completion, with pre-post quantitative analysis using the Self-Efficacy Interprofessional Experiential Learning Scale.

SAT., 8AM - 12PM

Effects of OT-OTA Intraprofessional Collaborative Education on Student Perceptions

Angela Duell MS OTR

Laura Rea, OTD, MBA, OTR

Course Level: Entry Level

Presentation Type: Poster

Category: Research

Course Length: .25 hrs.

This poster is an introduction to strategies for creating curriculum models for implementing intraprofessional collaborative educational activities for OT-OTA students and examining outcomes of intraprofessional education.

Poster Presentations

SATURDAY, 8AM - 12PM

The Experience of First-Generation Hispanic Students Obtaining a Graduate Degree

Jennifer Lopez-OTS

Roel Garcia, OTD OTR

Course Level: Entry Level

Presentation Type: Poster

Category: Education

Course Length: .25 hrs.

Attributes to success in college are multifactorial for Hispanic first-generation students. At a time when occupational success and socio-economic progress increasingly requires a postsecondary degree, the needs of Hispanic first-generation students should be addressed.

SATURDAY, 12 - 4PM

Unmasking Hispanic English-Only - Hispanic Spanish-Only Clinical Interaction

Alicia Pineda

Shirley Wells DrPH, OTR, FAOTA

Course Level: Entry Level

Presentation Type: Poster

Category: Research

Course Length: .25 hrs.

When the primary language and culture between the therapist and client are not the same, the therapeutic interaction between them can be difficult. Is this true when the therapist is a Hispanic English-only (HEO) speaker and the client is a Hispanic Spanish-only (HSO) speaker?

SATURDAY, 12 - 4PM

All Saints Episcopal School - Sensory Pathway Project by UT Tyler MOT Students

Ashley Meador, COTA, OTS

Amber Weaver, COTA, OTS

James McKinney, COTA, OTS; Laura

Moffat, COTA, OTS; Courtney Parham,

COTA, OTS; Emily Shaw, COTA, OTS

Course Level: Entry Level

Presentation Type: Poster

Category: Children and Youth

Course Length: .25 hrs.

UT Tyler MOT students partnered with All Saints School to create a sensory pathway project for their early-learning program to provide an array of sensory activities that would allow their students to engage in tasks to promote sensory regulation and classroom readiness.

SATURDAY, 12 - 4PM

UT Tyler Patriot Wellness

Stephanie Grundy, COTA

Virginia L. Dismukes, COTA

Enriko Cabezuela, Laura DeLeon, Marissa

Garza, Jessica Golla

Course Level: Entry Level

Presentation Type: Poster

Category: Health and Wellness

Course Length: .25 hrs.

We conducted a service-learning project with the goal to facilitate students to successfully participate in their primary occupations. In conjunction with an existing Wellness Initiative, we provided information and resources aimed at promoting physical, mental, emotional, and social wellness.

SATURDAY, 12 - 4PM

An Innovative Approach to Developing a Transitional Work Program Using OT Students

Amanda Frias,OTR, MOT, OTD

Leticia Guerrero, Student of OT

Course Level: Intermediate

Presentation Type: Poster

Category: Work & Industry

Course Length: .25 hrs.

This poster presentation describes how a community-based transitional work program located on a college campus can serve as a symbiotic opportunity for both graduate students of occupational therapy and young adults with disabilities wishing to develop employable skills.

SATURDAY, 12 - 4PM

Developing an Exemplar Emerging Practice FW II for those Impacted by Domestic Violence

Laura Rea, OTD, MBA, OTR

Michelle Holloway,

OT, MHL, CAPS, PP-OTDS

Amanda Amaro, OTS

Nadien Albanna, OTS

Course Level: Entry Level

Presentation Type: Poster

Category: Education

Course Length: .25 hrs.

This poster highlights the development of an exemplar emerging practice Level II fieldwork experience that serves women and children impacted by domestic violence and aligns with accreditation standards. The power of occupation is evident within this occupational-deprived setting and population.

SATURDAY, 12 - 4PM

The Impact of Prescription Opioid Use on Sleep in Older Adults

Claire Leighton, OTDS

Catherine Corder, OTS, Katie Nye, OTS,

Susana Tan, OTS., Kristin Thomas, OTS,

Lima Ghulmi, OTD, OTR, and Claudia

Hilton, PhD, MBA, OTR, FAOTA

Course Level: Intermediate

Presentation Type: Poster

Category: Productive Aging

Course Length: .25 hrs.

This systematic review examined the impact of prescription opioid use on sleep in older adults aged 40 and older.

SATURDAY, 12 - 4PM

Unmasking Steppin' Up for Success: A Transition Program for Sixth Graders

Darlene F. Guckenberger, Dr.OT, OTR

Course Level: Entry Level

Presentation Type: Poster

Category: Children and Youth

Course Length: .25 hrs.

Occupational therapy is perfectly positioned in schools to assist elementary students transition successfully to junior high through a universal approach to support positive mental health. This poster details the development of Stepping Up for Success: A Transition Program for Sixth Graders.

SATURDAY, 12 - 4PM

Developing and Utilizing Low-tech Devices to Enhance Communication for Pediatrics

Julie Hebert, OTD, OTR

Kristin Fairchild

Course Level: Entry Level

Presentation Type: Poster

Category: Children and Youth

Course Length: .25 hrs.

Low-tech communication devices can be easily developed and utilized for children to assist with communication. It allows the child and caregivers opportunities to express their needs to one another and can be a resource to promote processing skills to enhance communication.

Poster Presentations

Pre-Recorded ▶

Occupational Therapy and Occupational Therapy Assistant Collaboration in Academia

Alice Lee, OTS

Amy Belk, OTS

Christen Engel, OTS; Raina Curran, OTS;

Cristina Scionti, OT/L

Course Level: Entry Level

Presentation Type: Poster

Category: Education

Course Length: .25 hrs.

A valid and reliable survey was administered to Stanbridge OT and OTA students and results showed that most believe collaboration is necessary in order for services to be effective, and most felt their understanding of OT/OTA collaboration improved after completing a collaboration assignment.

Pre-Recorded ▶

Mentorship: An Opportunity Beyond the Traditional Educational Experience

Megan Taylor, OTD, OTR

Haley Glover

Course Level: Entry Level

Presentation Type: Poster

Category: Education

Course Length: .25 hrs.

Mentorship creates opportunity for professional growth within the traditional educational experience of OT school. This presentation introduces current literature on mentorship, provides an example of a faculty-student mentorship experience, and suggests ways to initiate mentorship within school.

Pre-Recorded ▶

What is Trauma-informed care? Teaching and Learning about Trauma for OT Practice

Stephanie Urigwe, OTD, MPH

Course Level: Entry Level

Presentation Type: Poster

Category: Education

Course Length: .25 hrs.

The purpose of this project is to explore pedagogy and learning theories utilized within Occupational Therapy to develop a pilot trauma-informed care learning module and to evaluate student learning following completion of the module towards occupational therapy practice.

Pre-Recorded ▶

Using Lexiles and Universal Design for Learning to Create Client Education Materials

Tina Fletcher, EdD, MFA, OTR

Natalie Garcia

Angela Marlin, Alicia Chen

Course Level: Entry Level

Presentation Type: Poster

Category: Education

Course Length: .25 hrs.

This poster highlights the practical uses of Lexile measurements and universal design for learning for occupational therapy practitioners to make consistent and replicable educational materials for clients of all abilities to benefit from.

Pre-Recorded ▶

Strategies for Developing Workshop and Training Materials for Partners with ASD

Tina Fletcher, EdD, MFA, OTR

Alicia Chen

Natalie Garcia, Casey Giles,

Angela Marlin

Course Level: Entry Level

Presentation Type: Poster

Category: Rehabilitation Disability and Participation

Course Length: .25 hrs.

This poster informs occupational therapy practitioners on the importance of including people with autism spectrum disorder in the process of developing workshops and training materials. We expand on strategies and guidelines to develop a successful partnership.

Pre-Recorded ▶

Learning within a New Emerging Practice FW II for those Impacted by Domestic Violence

Amanda Amaro

Nadien Albanna

Course Level: Entry Level

Presentation Type: Poster

Category: Education

Course Length: .25 hrs.

This poster highlights the student learning experiences specific to completion of a Level II FW experience within a new emerging practice that serves women and children impacted by domestic violence. The presenters will share experiences highlighting the power of occupation within this setting.

Pre-Recorded ▶

Stakeholder Perceptions on San Antonio Foster Youth Work Outcomes

Bonnie Inkel, Dr OT, MPA, OTR

Course Level: Entry Level

Presentation Type: Poster

Category: Research

Course Length: .25 hrs.

This examination of stakeholder perceptions on transitioned foster youth work outcomes is a crucial step toward identifying service strengths/barriers, characteristics of successful/unsuccessful outcomes, and opportunities for occupational therapy collaboration.



Pre-Recorded sessions and posters will be available through Dec. 31, 2021 on the whova app.

ALSO USE WHOVA TO:

- Network with other attendees and vendors through the "Meet ups" feature
- View speaker bio
- Submit questions to speakers
- Retrieve handouts
- Passport Game - Collect stamps each time an Exhibitor uses Lead Retrieval to scan attendee badge QR codes. Win prizes by completing your Exhibit Hall Passport!

The November 2020 Student Satisfaction Survey Results and Next Steps

Jennifer Sanchez-Morales, OT Student Representative
Dulce Paredes, OTA Student Representative
Sharon Hennigan, OTR, MA, CHT, CCM, Development Committee Chair



Jennifer Sanchez-Morales, TOTA OT Student Representative



Dulce Paredes, TOTA OTA Student Representative

Thank you to the students who shared their opinions about being a TOTA member and experiences using the student benefits and services. It has taken time to compile and analyze the survey results. This article will share those results along with new activities provided for students since January 2021 and next steps to improve or create meaningful experiences, activities, benefits, and services for students.

First, an introduction of the volunteers working on your behalf.

- Jennifer Sanchez-Morales, OT State Student Representative
- Dulce Paredes, OTA State Student Representative
- Sharon Hennigan, State Development Committee Chair
- Elizabeth Holland, State Membership Committee Chair

As state student representatives, Jennifer and Dulce serve on the TOTA board of directors and represent the needs and concerns of students in Texas. They also collaborate with district student representatives and lead work to create and update benefits, services, and activities available for students. State student representatives are appointed by the TOTA president. Jennifer was appointed to the board in 2020 and hosted the virtual student forum during the November 2020 state conference. Dulce was appointed to the board at the beginning of 2021. Jennifer and Dulce have met monthly with the district student reps and interested students, and began offering activities which met the students' needs described in the 2020 Student Satisfaction Survey.

Sharon serves as chair for the development committee. Its purpose is to evaluate and develop new programs, services, and professional opportunities for the membership and association. Elizabeth is chair for the membership committee. Its purpose is to evaluate and explore current and new membership opportunities,

connect with and grow membership, and recognize the contributions of its members to our profession and association through the Awards Committee.

Why TOTA surveyed the students about TOTA membership?

Students are the largest group of TOTA members. Over 50% of members are students. The TOTA executive officers and board sought to determine if current student benefits, services, and activities are meeting their professional needs. The 2020 Student Satisfaction Survey was developed to ask students about their membership experiences.

November 2020 Student Satisfaction Survey and Results.

The survey link was sent within an email to TOTA student members and students attending the 2020 TOTA Annual Conference held virtually in November. Seventy-five students responded to the survey; 16% OTA students and 84% OT students. Second year students made up 49.3% of respondents, first year students were 40% of respondents, Level II FW students were 6.7%, and new graduates sitting for the board exams were 4% of the respondents.

The survey asked students to share their opinions about TOTA. Question one was "How likely would you recommend TOTA to a colleague or fellow student." 53.3% of the students scored this question a 9 or 10, meaning they were extremely likely to recommend TOTA to a colleague or student. 46.8% of the students scored the question an eight or less implying they were less likely to recommend TOTA to a colleague or student. The students provided these consistent responses for not recommending membership to fellow students and colleagues

- a lack of awareness about TOTA and its purpose,
- unaware of resources available to students,
- not well advertised to student members, and
- (TOTA) is not doing much for the students.

Continued on next page

The second question asked if the student would remain a TOTA member after graduation with 62.7% of the students stating they would remain TOTA members after graduation. Students shared common reasons for continuing their membership which included

- Will remain a member if I find a job and live in Texas
- It's important to connect with OTs
- Access to the educational opportunities

The third question asked if the student was not a TOTA member, would he/she become a member. Post-survey assessment of this question revealed the results did not clearly answer the question. The question did not identify nonmembers and whether they would become a TOTA member after graduation.

The students used the comment section under each question to share their concerns and needs as OT and OTA students and how TOTA may assist in addressing these.

- (Students) want monthly meetings with student topics – student driven and relevant to students with suggestions on topics.
- Student events held at times convenient for students.
- More student resources and benefits.
- A website for students.
- Help with NBCOT.
- Relevant, current, social, and political information.
- Desire to learn and be involved in policy outside of Capital Hill Day.
- Student networking with students and practitioners.
- See more COTAD programs in the schools.

Analysis of responses produced two major action items. One, a list of twenty-six (26) new or updated student benefits, services, and activities addressing students' concerns and needs was generated. Items were ranked by importance and 11 benefits, services, and activities were identified to begin work on. The other 15 proposed benefits will be addressed as the initial 11 benefits are completed.

The second action item addressed communication, creating open channels of communication with district student representatives and students to provide methods for sharing ideas for student-directed activities and events. Beginning in 2021, Jennifer and Dulce hosted monthly virtual meetings with district student reps. They opened a TOTA Group Me App to support discussions among district student reps. In February, they hosted a virtual networking meeting in for students to connect. These activities provided students opportunities to network and share ways TOTA could support students' needs.

In March and April, Jennifer and Dulce began providing articles for students about students for the weekly TOTA *TIDBITS* newsletter. They helped design a student section focusing on student topics and activities for the quarterly TOTA publication *Revista*. A student educational event titled *Managing and Crushing Your Student Loan Debt* was coordinated with the support of the TOTA's executive director, Judi Joseph. In May, Dulce and Jennifer established communication with the Coalition of Occupational Therapy Advocates for Diversity (COTAD) chapter at the University of St. Augustine-Austin Campus, learning how this chapter was started. Students across the state have expressed interest in starting COTAD chapters at their schools.

Throughout this year a common theme was identified with the input of the students who participated in these TOTA student events: more student-focused events and resources. Dulce and Jennifer advocated on behalf of the student membership to make this possible. The state board have been extremely supportive and more student events are being planned for this year. Jennifer and Dulce will continue working with district student reps and interested students to host student activities and events along with serving on the state development committee to develop the 11 identified student benefits and services. Students interested in participating in the planning of student events are encouraged to contact Jennifer and Dulce at info@tota.org. Stay tuned for updates and details.

SCHOLARSHIP OPPORTUNITY

The demand for OTs is growing and TOTA and AOTF are working together to meet this demand. For more than 20 years, students enrolled in OT and OTA programs in Texas have received scholarships through AOTF thanks to the generosity of TOTA members. For the last 11 years, two students each year received over \$2,000 each in financial aid to assist them as they pursue their degrees. With the rising costs of tuition, living expenses and undergraduate debt, TOTA increased the amount of our TOTA scholarships. This was accomplished in part with the financial gift donated to TOTA by Nancy Griffin.

Applications for 2021 are currently being accepted.

To find out more about eligibility requirements and how to apply visit <https://www.aotf.org/Scholarships/How-to-Apply>



**TOTA Endowed Scholarship
2021 Recipient:**
Maria Theresa Bautista – UTMB
Theresa is in her second year of school as an OTD student at the UT Medical Branch in Galveston



CALLING ALL STUDENTS!

Join us at TOTA's Student Networking Event: Let's Fiesta!

Friday, November 5th, 2021

7:15-8:30 PM

Abstract:

This student networking event aims to connect students across Texas in a relaxed environment. Today's students will be tomorrow's practitioners and leaders, so join us and let's fiesta!

Learning Objectives:

- Students will network with at least three new students.
- Students will exchange contact information with at least three new students.
- Students will network with TOTA's State Student Representatives.

Format/structure:

There are 3 small conference rooms that open up to the outdoor/pool area. Food and beverages included!

Schedule

7:15-7:20 PM

Jennifer and Dulce introduce themselves and the meaning behind this event.

7:20-8:20 PM

Allow students to enjoy themselves and begin networking!

8:20-8:30 PM

Collect names for raffle and draw the winner!

You could Win a \$50 Amazon gift card!

Exchange contact info with at least 3 students (that you haven't met before) to be entered in a raffle. *Must be present to win gift card.*

Walk a Mile in a Variety of OT Practitioners' Shoes



Saturday November 6, 2021
8:00 AM -9:45 AM
Location: West Extended

This event is designed for students to learn from a variety of occupational therapy practitioners who will cover common questions a student may have. It aims to provide a clear understanding of what the occupational therapy practitioner's role is in common and specialty practice settings.

Learning Objectives:

- 90% of students will rank this session as a 5/5 at the close of the session via online survey.
- Students will be able to share 3 items they learned in this session via online survey.

Format/structure: Each presenter will have 9 minutes to cover introduce themselves and cover 3 general questions which include:

- What does a typical workday look like for you?
- What are the common diagnoses you see in this type of setting?
- What are the main resources you use in this setting (e.g., books, assessments, etc)?

Schedule

8 to 8:05 am

Welcome and Introductions
Jennifer and Dulce

8:06am to 8:15am

Pediatrics - ECI or Outpatient
Michelle Atanu, OTR, MOT

8:16am to 8:25am

General Adult Outpatient/Hand Therapist
Matthew Wymore, OTD, OTR, CHT,

8:26 to 8:35

Driving/Community Mobility
Chad Strowmatt, OT, CDRS

8:36 to 8:45

Mental Health Inpatient
Celestia Washington, COTA

8:46 to 8:55

School-based services
Eileen R. Garza, OTR, ATP/SMS, PhD, FAOTA

8:56 to 9:05

Home health
Home assessment/modification
Anima Smith, OTR

9:06 to 9:15

Inpatient rehab
Esmeralda Lizcano, OTR

9:16 to 9:25

NICU or other specialty area
Carrie Siemers, OTR, MS, BCPR

9:26 to 9:35

General questions and discussions

9:36-9:45

Benefactor (*Beverly Palmer*)
Raffle contest

JOIN US AS WE RECOGNIZE EXCELLENCE

PRESENTING OUR NOMINEES

NOMINATIONS HAVE CLOSED
Awards are presented during the TOTA Annual Conference

**The award winners will be officially announced
at the reception on Friday Nov. 5th at 6:30 PM.**

And the 2021 Nominees are:

Occupational Therapist of the Year

Megan Frazier, OTR, MS, DRS
Laurie Stelter, OTR, PhD
Matt Wymore, OTD, OTR, CHT, COMT

Occupational Therapy Assistant of the Year

Alyssa Burney, COTA
Ada Jackson, COTA

Roster of Merit

Robin V. Clearman, OTR, CLT
William Sit, Ph.D., OT, BCPR

Distinguished Service Award

Kira E. Beal, OTR, Ed.D, OTD, CLT
Sharon Hennigan, OTR, MA, CCM

Letter of Appreciation

Eileen Garza, OTR, ATP/SMS, PhD, FAOTA

Award for Clinical Excellence

No nominations received

Clinical Educator of the Year Award

Loree Pryor, OTR, OTD

Honorary Life Membership

Cindy Brosig, OT, CHT

OTA/OT Collaboration Award

Kelly Parmet, COTA
and Rachel Campbell, OTR

Interdisciplinary Team Award

Loree Pryor, OTD, OTR

Academic Educator of the Year

Edward D. Gayden, COTA
Julie Hebert, OT, OTD
Katherine Lawson, OTR, LMSSW, PhD
Jennifer Martin, OTD, OTR, CHT, CLT

Student Leadership Award

Dulce Paredes
Rachel Perez
Jennifer Sanchez-Morales

Horizon Award

Brittney Burton, OTR, MOT,
Clarissa Medrano, OTR, MOT
Amber Richardson, OTR, MOT, OMS, CHES

TOTA 2021 Service Awards

Outgoing Board Members

Adele Brunson –
*TOTA State Secretary
2017-2021*

Alamo South

Christopher Gillis –
*Chair Committee on
Standards & Practice*
Hena Patel –
Student Rep
Luna Lorida –
Student Rep
Fernanda Cortes Ramirez –
Student Rep
Jennifer Sanchez Morales –
Student Rep

Capital Centex

Katelyn Halby –
District Treasurer
Mattie Montague –
OT Student Rep

Gulf Coast East

Diane Collins –
District Chair
Vicki Thomas –
District Secretary
Kira Beal –
District Vice Chair
Pei Fen Chang –
*Chair Committee
on Education*
Westen Decker –
OT Student Rep

Trinity North

William Sit –
District Treasurer
Bailey Bynum – *Parker
University, Student Rep*
Grayce Garrison – *Parker
University, Student Rep*
Arianne Alfonso –
TWU, Student Rep
Meaghan Patterson –
TWU, Student Rep

Rio Grande District

Vanessa Buckler – *Chair
Committee on Membership*
Andres Gonzalez –
OTA Student Rep (PIMA)

TOTA 2021 Awards and Recognition Committee

Seneca Wilson - Chair

Vanessa Buckler
Rebecca Crossland

Helen Wan
Julie Erb

Elizabeth Laurie
Stephanie Sellers

Educational Sessions

Register for classes early to secure your seat.

FRIDAY

101 FRIDAY, 8AM - 6PM Adding Low Vision Services to the Generalist OT Practice

Tamara Traber, OTR, CLVT
Regina Budet, OTR, OTD
Theresa Marie Smith, Ph.D., OTR, CLVT
Serena Speaker, OTR, SCLV
Diana Arnold, OTR, MOT, CLT
Course Level: Entry Level
Presentation Type: Workshop
Category: Rehabilitation Disability
and Participation
Course Length: 7.5 hrs. Workshop

Giving the generalist OT the necessary skills and tools to add low vision services to their existing practice and give them a broader scope of intervention to achieve better outcomes to allow their client to improve participation in valued activities.

102 FRIDAY, 8AM - 6PM Promoting and Improving Population Health Through Occupation

Shirley A. Wells, DrPH, OTR, FAOTA
Course Level: Entry Level
Presentation Type: Workshop
Category: Health and Wellness
Course Length: 7.5 hrs. Workshop

This presentation will expound on the role of occupational therapy in population health practice, including how to conduct a needs assessment, program development, and the skills and competencies necessary to plan for population health initiatives and interventions.

103 FRIDAY, 8AM - 6PM Neuroscience Updates in Occupation and Adaptation; Implications for Practice

Mary Frances Baxter, PhD, OT, FAOTA
Amber Covington, OTR
Christine E. Haines, MA, MOT, OTR
Sudhagar Gangatharam OTR
Teresa M. Green, MS, OTR/L, CSRS, CPAM
Sarah Rupp-Blanchard, OTD, MHA, OTR
Anne Sullivan, MOT, OTR
Course Level: Intermediate
Presentation Type: Workshop
Category: Rehabilitation Disability
and Participation
Course Length: 7.5 hrs. Workshop

This course focuses on updates in the neuroscience of occupation and

adaptation. The neural structures and mechanisms of adaptations of movement, learning, chronic stress, transition, ASD in adults, and clinical reasoning will be presented. Implications for clinical practice will be discussed.

104 FRIDAY, 8AM - 9:45AM Right on your Batteries... Cognitive Mapping to Revolutionize Addressing chronic Disorders

Karen Aranha, PhD, OT
Germaine Ferreira, PT, DPT, MSPT, BHMS
Course Level: Intermediate
Presentation Type: Short Course
Category: Productive Aging
Course Length: 1.75 hrs.

Chronic disorders in older adults contribute to morbidity and mortality and are particularly serious with the current COVID-19 pandemic. Management with the use of cognitive mapping can augment an occupational therapist's skillset to empower clients to self-manage the disease and quality of life.

105 FRIDAY, 8AM - 9:45AM Incorporating Mindfulness in OT Education: What are the benefits?

Cecilia Fierro, OTD, OTR
Course Level: Entry Level
Presentation Type: Short Course
Category: Mental Health
Course Length: 1.75 hrs.

Mindfulness is used to manage pain, stress, anxiety, and improve quality of life. Studies have focused on mindfulness programs in schools with positive results. Implementing mindfulness in OT curricula may be beneficial for OT student mental health, but also as tool for OT practice.

106 FRIDAY, 8AM - 9:45AM Enhancing Your Practice Through Capstone Student Collaboration

Laurie Stelter, OTR, PhD
Shannon Levandowski, EdD, OTD, BCP, SCSS
Autumn Clegg, OTR, EdD
Course Level: Entry Level
Presentation Type: Short Course
Category: Education
Course Length: 1.75 hrs.

Academic representatives of three Texas entry-level doctoral programs collaborate to describe the doctoral capstone process, the benefits of the capstone to all stakeholders, specific opportunities for academic and community/practice collaboration, and the specific steps for becoming involved.

107 FRIDAY, 8AM - 9:45AM Let's Talk Occupation: OT's Role in Effective Interdisciplinary Team Communication

Christopher Gillis OTR
Theresa Prudencio OTR
Course Level: Intermediate
Presentation Type: Short Course
Category: Rehabilitation Disability
and Participation
Course Length: 1.75 hrs.

The effective care of clients with complex medical needs require an interdisciplinary team to collaborate on the client's care. The goal of this course is to discuss best practices in team communication and to highlight the role that OT's language of occupation brings to this communication.

108 FRIDAY, 8AM - 12PM Poster Presentations

109 FRIDAY, 12PM - 4PM Poster Presentations

110 FRIDAY, 10AM - 12PM Stereognosis Impairment and Astereognosis: Assessment and Intervention

Kathlyn L. Reed PhD, OTR, FAOTA, MLIS
Course Level: Entry Level
Presentation Type: Short Course
Category: Rehabilitation Disability
and Participation
Course Length: 2 hrs.

Stereognosis impairment negatively affects everyday task performance. Testing is quick and easy, and intervention is possible.

111 FRIDAY, 10AM - 12PM Clinical Mentoring: How Successful Occupational Therapists Become Positive Mentors

Carrie Siemers OTR, MS, BCPR
Course Level: Intermediate
Presentation Type: Short Course
Category: Education
Course Length: 2 hrs.

Many occupational therapists become mentors at some point in their career. This course will define mentoring basics, review the evidence, and highlight how we can utilize our training and framework as occupational therapists to be successful clinical mentors.

Educational Sessions

Register for classes early to secure your seat.

112 FRIDAY, 10AM - 12PM **The Role of Occupational Therapy in COVID-19 Recovery Within Skilled Nursing**

*Constance Welcome, MOT, OT
Kourtne Donnaud, OTR/RAC-CT
Erin Johnson, OTR*

*Course Level: Entry Level
Presentation Type: Short Course
Category: Rehabilitation Disability and Participation
Course Length: 2 hrs.*

This course will review the impact of COVID-19 on the elderly, explore the illness severity spectrum as well as the potential effects of preventative measures. We will review evaluation considerations and explore how occupational performance can positively impact COVID-19 recovery.

113 FRIDAY, 10AM - 12PM **Occupation-Based Holistic Treatment to Support Mental Health Recovery**

*Amy Honeck, OTR
Jay Burns, OTR*

*Course Level: Entry Level
Presentation Type: Short Course
Category: Mental Health
Course Length: 2 hrs.*

The prevalence of mental illness in the U.S. guarantees that occupational therapist will treat individuals with mental health diagnoses regardless of practice setting. Therefore, OTs must be familiar with interventions to support occupation and enhance recovery for individuals with Mental Illness.

114 FRIDAY, 1PM - 3PM **The 2020 AOTA Ethics and Us**

Kathlyn L. Reed PhD, OTR, FAOTA, MLIS

*Course Level: Entry Level
Presentation Type: Short Course
Category: Education
Course Length: 2 hrs.*

Summary of changes in the AOTA 2020 Occupational Therapy Code of Ethics and the significance to us as practitioners, educators, students, and investigators/researchers.

115 FRIDAY, 1PM - 3PM **Unmasking the Role of OT in Functional Neurological Symptom Disorder**

Kimberly Godfrey OTR, MOT

*Course Level: Entry Level
Presentation Type: Short Course*

*Category: Rehabilitation Disability and Participation
Course Length: 2 hrs.*

Many disciplines misunderstand patients with Functional Neurological Symptom Disorder, however they need care just as much as other patients do. This course will focus on understanding what functional neurological symptom disorder is and how to promote independence and engagement in occupation.

116 FRIDAY, 1PM - 3PM **Providing Culturally Sensitive Care in the Pediatric Population**

Michelle Atanu, OTR

*Course Level: Entry Level
Presentation Type: Short Course
Category: Children and Youth
Course Length: 2 hrs.*

This 2-hour lecture discusses Black/African American cultural differences and similarities that impact occupational therapy practitioners. We will also discuss ways practitioners can embrace cultural differences in order to provide quality and individualized care within the pediatric setting.

117 FRIDAY, 1PM - 3PM **Legislative Update**

*John Luna, OTD, OTR
Brent Braveman, PhD, OTR, FAOTA
Denise Rose, JD (TOTA Lobbyist)
Kate Goodrich, JD*

*(TOTA Legislative Consultant)
Course Level: Entry Level
Presentation Type: Event
Category: Legislation
Course Length: 2 hrs.*

118 FRIDAY, 4PM - 6PM **The Power of Occupation: Fieldwork Experience in Shelter for Unaccompanied Minors**

*Claudette Fette, PhD, OTR, CRC
Jennifer Martin, OTD, OTR, CHT, CLT
Shannon Levandowski,
EdD, OTD, OTR, BCP, SCS*
*Additional presenters: Alicia Y Chen,
Catalina Muniz, Hope Fink,
Isabel Diaz, Perla Al*

*Course Level: Intermediate
Presentation Type: Short Course
Category: Mental Health
Course Length: 2 hrs.*

This panel with students and faculty will discuss a faculty led level 1 fieldwork experience in a massive unaccompanied

minors emergency shelter. We'll present our unique capacities for this setting, emerging opportunities, what we did and our outcomes, strategies for success and issues to look for.

119 FRIDAY, 4PM - 6PM **Peripheral Nerve Injuries: Moving from Injury to Function**

*Donna Walls, OTR, OTD, CHT
Michelle Saks, OTR, OTD, CHT, GTS*

*Course Level: Entry Level
Presentation Type: Short Course
Category: Rehabilitation Disability and Participation
Course Length: 2 hrs.*

The purpose of this course is to present the occupational therapist's role in peripheral nerve injuries of the upper extremity. Emphasis will be placed on the evaluation process, intervention options, and movement toward meaningful occupations based on current standards of practice.

120 FRIDAY, 4PM - 6PM **The Natural Connection Between Occupational Therapy and Human-Centered Design**

Lillie Thomas, MOT, OTR

*Course Level: Entry Level
Presentation Type: Short Course
Category: Rehabilitation Disability and Participation
Course Length: 2 hrs.*

This presentation opens up occupational therapists' eyes to the world of design related to all practice settings and promotes interprofessional collaboration. Learn the process and methods of design thinking and human-centered design and discover your inner design capabilities.

121 FRIDAY, 4PM - 6PM **A Journey Towards Globally Connected Profession: Occupational Therapy in India**

Karthik Mani, OTD, MSc, OTR

*Course Level: Entry Level
Presentation Type: Short Course
Category: Research
Course Length: 2 hrs.*

This presentation summarizes the findings of a series of recent research studies conducted among occupational therapy (OT) practitioners in India to help the audience compare and contrast OT practice in India and the United States. The session also includes a brief review of OT history in India.

Educational Sessions

Register for classes early to secure your seat.

SATURDAY

201 SATURDAY, 8AM - 9:45AM **Using Constructivist Theory and a Flipped Classroom to Teach Evidence-Based Practice**

April C Cowan, OTD, OTR, CHT
Karen Ratcliff, PhD, OTR
Chih-Ying (Cynthia) Li, PhD, OTR
Course Level: Intermediate
Presentation Type: Short Course
Category: Education
Course Length: 1.75 hrs.

Describes the impact of the constructivist theory of learning on evidence-based practice confidence for occupational therapy students in an entry-level doctoral program. The students demonstrated increased confidence in applying external evidence after participation in a flipped classroom.

202 SATURDAY, 8AM - 9:45AM **Pediatric Practice with Autistic Clients - Valuing Neurodiversity over Masking**

Normandy Rindahl, OTR, MOT
Shannon Levandowski, EdD, OTD, MS, OTR, BCP
Course Level: Entry Level
Presentation Type: Short Course
Category: Children and Youth
Course Length: 1.75 hrs.

(Note: identity-first language is preferred by most autistic individuals). This course will cover OT interventions for autistic children, gaps in autistic literature, and in-progress research. Participants will apply a neurodiversity-informed approach to case studies for deeper understanding.

203 SATURDAY, 8AM - 9:45AM **Memory Impairment: Assessment & Intervention**

Kathlyn L. Reed PhD, OTR, FAOTA, MLIS
Course Level: Intermediate
Presentation Type: Short Course
Category: Rehabilitation Disability and Participation
Course Length: 1.75 hrs.

Memory impairment interferes with a person's ability to carry out everyday occupation and may be present in any condition affecting brain function. This presentation focuses on the types of memory impairment documented in the occupational therapy literature including assessment and intervention.

204 SATURDAY, 8AM - 9:45AM **Powering Your Mind: The OTA Students' Mental Health Journey Through Virtual Learning**

Sheina Farooqui, OTR
Hunter Bozant
Rachel Perez
Course Level: Entry Level
Presentation Type: Short Course
Category: Health and Wellness
Course Length: 1.75 hrs.

This course aims to bring awareness to the academic perspective of virtual learning during COVID-19 by discussing and providing mental health strategies implemented by students to achieve academic success. Interactive groups will be utilized for both students and clinicians.

205 SATURDAY, 8AM - 9:45AM **Covid-19's Impact Upon Psychosocial Well-being and Daily Occupations in LTCFs**

Pei-Fen Chang, OTR, PhD
Kai-Li Tsai, PhD
Clarissa Richard, OTR, MOT
Harriett Davidson, MS, OT
Gayle Hersch, OTR, PhD
Course Level: Entry Level
Presentation Type: Short Course
Category: Productive Aging
Course Length: 1.75 hrs.

Impact of Covid-19 upon life in LTC has been dramatic. Psychosocial issues are challenging typical occupations of residents. Case scenarios will demonstrate change in daily occupations. Attendees will share experiences. The role of OT in LTC mid- and post- pandemic will be reviewed and discussed.

206 SATURDAY, 8AM - 9:45AM **Unmasking the Power of Diversity in the Field of Occupational Therapy**

Leslie Werner, OTR, MOT
Tunesha Banks, OTR, OTD, MBA c/SIPT, c/NDT
Course Level: Entry Level
Presentation Type: Short Course
Category: Children and Youth
Course Length: 1.75 hrs.

This presentation addresses the power and importance of diversity for OT professionals from underrepresented minority (URM) populations. Topics of discussion will include methods to address diversity expansion, promotion, and challenges for URM across all OT settings.

207 SATURDAY, 8AM - 9:45AM **Student Engagement Strategies for Virtual Learning in an Anatomy Applied To Occupation**

DeAn Sellmann, BSOT, OTD, OT
Lesley Khan-Farooqi, PhD, OTD, OTR, CHT
Course Level: Intermediate
Presentation Type: Short Course
Category: Education
Course Length: 1.75 hrs.

The COVID-19 pandemic changed the landscape of higher education. The purpose of this presentation is to demonstrate creative strategies and technologies used during virtual applied anatomy education by University of St. Augustine MOT/OTD educators from the Austin and Dallas, Texas campuses.

208 SAT., 8AM - 12PM **Poster Presentations**

209 SAT., 12PM - 4PM **Poster Presentations**

211 SATURDAY, 1PM - 3PM **Stroke Evaluation: Acute & Post-Acute**

Judy Skarbek, OTR, MSRS
Esmeralda Lizzano, OTR, MOT
Course Level: Entry Level
Presentation Type: Short Course
Category: Rehabilitation Disability and Participation
Course Length: 2 hrs.

This course will expand a clinician's knowledge and approach to evaluating the acute and post-acute care stroke patient and review outcome measures.

212 SATURDAY, 1PM - 3PM **Cultural Identity: Relevance to Occupations**

Kira Elizabeth Beal, OTR, EdD, OTD
Angela Y. Duell, MS, OTR
Course Level: Entry Level
Presentation Type: Short Course
Category: Education
Course Length: 2 hrs.

Occupations are the root of occupational therapy and relevant for practitioners to understand their own cultural identity as well as the identities of those we provide interventions. To provide meaningful occupations, OT practitioners should understand cultural differences impact on occupations.

Educational Sessions

Register for classes early to secure your seat.

213 SATURDAY, 1PM - 6PM **Occupational Therapy for Balance Rehabilitation: Background and Practical Strategies**

Helen S Cohen, EdD, OTR, FAOTA

Course Level: Entry Level

Presentation Type: Long Course

Category: Rehabilitation Disability and Participation

Course Length: 4 hrs.

Balance problems cause decreased ADL independence so treatment of balance problems is within the scope of practice for occupational therapy. You will learn the background for understanding balance, balance screening tests, and practical treatment strategies for occupation-based balance therapy.

214 SATURDAY, 1PM - 6PM **Performance Assessment of Self-Care Skills: Mini Workshop**

Ricky Joseph, PhD, MA-HRM, OTR

Lauri L. Joseph, MA, OTR

Course Level: Intermediate

Presentation Type: Long Course

Category: Rehabilitation Disability and Participation

Course Length: 4 hrs.

This workshop is a continuation of the TOTA's effort to equip Texas OTs with the ability to administer and score evidence-based functional assessments.

215 SATURDAY, 1PM - 3PM **Going Beyond Functional Performance for Successful Aging in Place**

Melissa Saffron,

MS/OTR, CAPS, ECHM, CEOLD

Michelle McCarty,

MA, LSSP, COTA, CAPS, ECHM, CEOLD

Course Level: Entry Level

Presentation Type: Short Course

Category: Productive Aging

Course Length: 2 hrs.

For today's older adults successfully aging in place, independence goes beyond functional performance and involves choices controlling the direction and quality of their lives. Learn to assist older adults in making choices aligning the mind, body, and spirit for healthy aging in place.

216 SATURDAY, 1PM - 3PM **School-based Occupational Therapy During Covid-19: Unmasking Occupation for Students**

Lou Ann Hintz, PhD, OTR

Christene Maas, MA, OTR

Tina Fletcher, EdD, MFA, OTR

Course Level: Intermediate

Presentation Type: Short Course

Category: Children and Youth

Course Length: 2 hrs.

The purpose of this presentation is to share the experiences of a panel of school-based occupational therapists who provided services to students during the COVID-19 pandemic. Panelists will share the barriers and supports faced, and opportunities for role expansion in school-based practice.

217 SATURDAY, 1PM - 3PM **Community Mental Health Practice in Texas; Getting Down to Brass Tacks**

Claudette Fette, PhD, OTR, CRC

Course Level: Intermediate

Presentation Type: Short Course

Category: Mental Health

Course Length: 2 hrs.

Texas mental health practice review across a public health continuum including promotion prevention and intervention. We will discuss areas we can practice in including our public mental health system and look at barriers that exist. We'll also discuss strategies to extend mental health practice.

218 SATURDAY, 1PM - 2:30PM **Bed Height Choice and Hand and Low Back Forces when Boosting a Patient in Bed**

Robert E Larson, OTR, PhD

Spencer R Peterson, MS; Lauren Adams,

MS; Ulrike H Mitchell, PT, PhD

Course Level: Entry Level

Presentation Type: Research Forum

Category: Research

Course Length: .25 hr. each topic

Allied Health Professionals frequently experience low back pain secondary to patient handling tasks. One factor may be failure to adequately adjust the bed prior to patient handling. This research explored low back and hand force differences between a self-chosen and an optimal bed height.

218 SATURDAY, 1PM - 2:30PM **Occupational Approaches to Reading within Educational Interventions**

Catherine Candler, OTR, PhD, BCP

Lauren Box OTR Shae Berry OTR Valerie

Escobar OTR Sydney Rangel OTR Carly

Smith OTR Brenna White OTR

Course Level: Intermediate

Presentation Type: Research Forum

Category: Children and Youth

Course Length: .25 hr. each topic

Educational interventions for reading listed by the What Works Clearinghouse were examined for features of an occupational approach. Of 133 interventions only 13 were fully occupation-based, though most had some occupational perspectives, primarily that of instilling internal motivation for reading.

218 SATURDAY, 1PM - 2:30PM **Surveys Vs Semi-structured Interviews for Data Collection with Older Individuals**

Madison Rowlison, OTD

Karen Aranha, PhD, OT

Course Level: Entry Level

Presentation Type: Research Forum

Category: Research

Course Length: .25 hr. each topic

A triangulated pilot study used a Place Standard Assessment (PSA) and SSIs to understand the needs of under-resourced older adults living along the USA-Mexico border. SSIs emerged as a superior tool to build a rapport and gather detailed information on contrary responses obtained from the survey.

218 SATURDAY, 1PM - 2:30PM **Unmasking Experiences of Occupational Therapists Providing Assistive Technology Services**

Selby McDowell, OTD, OTR

Karen Aranha, PhD, OT

Angela Blackwell, PhD, OTR

Eric Lantz, OTR

Course Level: Intermediate

Presentation Type: Research Forum

Category: Work & Industry

Course Length: .25 hr. each topic

This phenomenological study examines occupational therapists (N=8) press for mastery in providing assistive technology services. Their occupational challenges, role demands, and responses are all highlighted, as they strive to become successful in their area of expertise.

Educational Sessions

Register for classes early to secure your seat.

218 SATURDAY, 1PM - 2:30PM **Exploring Strategies for Teaching Sexuality Content in Occupational Therapy Curriculum**

Elizabeth DeLuca, OTD, OTR, CAPS

Course Level: Entry Level

Presentation Type: Research Forum

Category: Education

Course Length: .25 hr. each topic

This qualitative study was designed using a phenomenological approach to understand the lived experiences of occupational therapy educators teaching sexuality content in entry-level programs and the strategies that they employ to manage self-perceived barriers.

219 SATURDAY, 4PM - 6PM **Flying Drone: Unmasking the Power of Emerging Innovative Occupation**

Josephine Chan, PhD, OT

Course Level: Entry Level

Presentation Type: Short Course

Category: Rehabilitation Disability and Participation

Course Length: 2 hrs.

Robotics and Artificial Intelligence will play dominating roles in the 21st century daily living. Flying drone is one of the robotic applications. As a profession that values daily occupations, OT should explore and integrate using drones in our repertoire of assessment and intervention techniques!

220 SATURDAY, 4PM - 6PM **Trauma, Stress, and Resilience: Implications for OT**

Diane M. Collins, OT, PhD

Christopher Garcia

Adama Brooks, OTR, OTD

Abbas H. Quamar, PhD, CRC

Course Level: Entry Level

Presentation Type: Short Course

Category: Mental Health

Course Length: 2 hrs.

Trauma is interpersonal violence such as sexual or physical abuse, severe neglect, loss, or witnessing of violence, terrorism, or disasters. Nearly 56% of U.S. adults reported at least one traumatic event in their lives. We describe how OTs can build resilience in those with traumatic disorders.

221 SATURDAY, 4PM - 6PM **21 Day Advocacy Habit for Occupational Therapy Practitioners: Leveling Up**

John S. Luna, OTR, OTD

Roel Garcia OTR, OTD

Thelma Ochoa OTR, OTD

Course Level: Entry Level

Presentation Type: Short Course

Category: Education

Course Length: 2 hrs.

This interactive presentation provides resources and strategies to integrate into the daily routine of occupational therapy practitioners that can strength current advocacy efforts at the person level, group, and population level.

222 SATURDAY, 4PM - 6PM **Power of Community Engagement at the Student Level: Developing Essential Skills**

Amber Chavez, MSOT

Ruth Sanchez, MSOT

Course Level: Entry Level

Presentation Type: Short Course

Category: Rehabilitation Disability and Participation

Course Length: 2 hrs.

This presentation discusses the influence of community engagement at the student level through the use of organizational structures and intrinsic and extrinsic motivators to enhance knowledge and skills in community-based occupational therapy services.

223 SATURDAY, 4PM - 6PM **What Is the Doctoral Capstone and How Can It Advance My Practice?**

Barbara M. Doucet, PhD, OTR

Hope A. Hodges, PhD, OTR

Marian Gillard, PhD, OTR (contributor)

Course Level: Entry Level

Presentation Type: Short Course

Category: Education

Course Length: 2 hrs.

Participants will learn how mentoring a doctoral capstone student can specifically address worksite initiatives, expand the role of occupational therapy within their organization, and stimulate creative solutions to organizational challenges.

224 SATURDAY, 4PM - 6PM **Wisdom and Wine - Neural regeneration in the upper limb with restoration of hand function**

Philip J. Horner, PhD

Course Level: Intermediate

Presentation Type: Event

Category: Rehabilitation Disability and Participation; Research

Course Length: 1 hr.

This session will focus on the latest research on the role of neurons that support upper extremity movement rejuvenation and the restoration of hand function

ON DEMAND

301 Pre-Recorded **Promoting Occupational Justice in Occupational Therapy Fieldwork**

Joahnes Gatdula,

OTD, OTR/L, CPAM, ITOT

Course Level: Entry Level

Presentation Type: Short Course

Category: Education

Course Length: 1.75 hrs.

This seminar will discuss the role of OT promoting occupational justice through community-built model in level II fieldwork placement among homeless clients.

302 Pre-Recorded **Handwriting and MTSS. Embed. Collaborate. PARTICIPATE. Graduate!**

Beverly H Moskowitz,

DOT MS OTR/L FAOTA

Course Level: Intermediate

Presentation Type: Short Course

Category: Children and Youth

Course Length: 1.75 hrs.

Proven, adaptable, measurable & easily tiered, the Size Matters Handwriting Program mirrors MTSS's need for accountability. Learn the research, concepts & strategies to build legibility school wide, in classrooms & individually, and monitor progress. Participate in creating kid-friendly materials.

Educational Sessions

Register for classes early to secure your seat.

303 Pre-Recorded ▶

Adapting Educational and Play Activities for Children with Physical Disabilities

Teresa de la Isla, OTR, MS

Course Level: Entry Level

Presentation Type: Short Course

Category: Children and Youth

Course Length: 1.75 hrs.

Come "unmask" a variety of ways to help children with physical disabilities fully participate in educational and play activities in a meaningful way! The presentation includes practical strategies for adapting books and toys, exploring alternative pencils, and setting up the environment.

304 Pre-Recorded ▶

Successful Clinical Documentation in a PDPM World

Lynda Jennings, OTR, RAC-CT

Course Level: Intermediate

Presentation Type: Short Course

Category: Productive Aging

Course Length: 1.75 hrs.

The short course will provide the clinician with best practices for effective skilled documentation under the new Medicare reimbursement model PDPM as well as, improve the attendees understanding of the role of the MDS and what components drive reimbursement.

305 Pre-Recorded ▶

Treatment of Intrinsic and Extrinsic Imbalance

Cecilia Fierro, OTD, OTR

Jesus Delgado OT, CHT

Noah Munoz, OTR

Course Level: Intermediate

Presentation Type: Short Course

Category: Rehabilitation Disability and Participation

Course Length: 1.75 hrs.

This course focuses on the impact of intrinsic/extrinsic imbalance of the hand and the impact on function and occupation. Evidence-based interventions and orthosis will be discussed to improve participation in occupation.

306 Pre-Recorded ▶

Revealing the Genius in Everyday Occupational Therapy Practice

Suzanne Peloquin, OTR, PhD, FAOTA

Course Level: Intermediate

Presentation Type: Short Course

Category: Health and Wellness

Course Length: 1.75 hrs.

Practice in this community setting enacts the profession's guiding beliefs in a way that reveals our unique genius. This session elaborates select approaches that have led to impressive client satisfaction and engagement. Strategies used among women in recovery can work well in many other settings.

307 Pre-Recorded ▶

Unmasking the Power of Occupational Therapy with Lifestyle Medicine: Teachable Moments

Rene Pere, MOT/OTR, DipACLM

Course Level: Entry Level

Presentation Type: Short Course

Category: Rehabilitation Disability and Participation

Course Length: 1.75 hrs.

The six pillars of Lifestyle Medicine include: nutrition; physical activity; improved sleep; stress reduction; positive social connections; and cessation of unhealthy substances. Lifestyle Medicine can provide teachable moments in traditional settings to unmask the power of Occupational Therapy.

308 Pre-Recorded ▶

Fostering Experiential Learning and Collaboration via Interactive Simulations

Maura Lavelle, MS, OTR

Sarah Walsh, MOT, OTR

Wendy Brzozowski, BS, COTA

Course Level: Intermediate

Presentation Type: Short Course

Category: Education

Course Length: 1.75 hrs.

Presenters will demonstrate the clinical applications of interactive, computer-based simulations while discussing evidence-based methodologies for integrating simulation into occupational therapy curriculum, fieldwork experiences, and clinical practice.

309 Pre-Recorded ▶

Cancer Survivorship Programs in the US and Israel; an International Exchange

Mary Frances Baxter PhD, OT, FAOTA

Khawla Loubani, PhD, OT

Katie M. Polo, DHS, OTR, CLT-LANA

Course Level: Entry Level

Presentation Type: Short Course
Category: Rehabilitation Disability and Participation

Course Length: 1.75 hrs.

International research exchange can inform practice and OT services. This session highlights a collaboration between OT researchers in Israel and the US providing insights into similarities and differences in OT services for cancer survivors. Contributions to informed practice are presented.

310 Pre-Recorded ▶

Competency-Based Education Activities for Occupational Therapy Students

John S. Luna, OTR, OTD

Roel Garcia OTR, OTD

Mike Bradley OTR, PhD

Eva-Maria Anger OTR, OTD
Thelma Ochoa, OTR, OTD

Course Level: Entry Level

Presentation Type: Short Course

Category: Education

Course Length: 1.75 hrs.

This presentation provides strategies and resources for occupational therapy practitioners working in an academic setting to develop competency-based activities to meet course objectives associated with intervention courses.

311 Pre-Recorded ▶

The Power of Resilience for Reengagement in Occupation

Celina Casas, OTR, OTD

Dr. Rosalinda Mercado

Course Level: Entry Level

Presentation Type: Short Course

Category: Mental Health

Course Length: 1.75 hrs.

Discover the power of resilience and its impact on an individual's occupational performance. Learn the four fundamentals of resilience and how to incorporate them into daily OT sessions. OT can influence clients to learn from life's experiences and focus on resilience throughout the OT process.

312 Pre-Recorded ▶

Poster Sessions

TOTA Annual Conference Student Organization Store

November 5-6, 2021
Hyatt Regency Houston Hotel
Exhibit Hall (lower level)

REGISTER YOUR
STORE HERE

FRIDAY, NOVEMBER 5

Set up begins no earlier than 8:00am

Store Hours: 11:30am – 4:00pm

SATURDAY, NOVEMBER 6

Set up begins no earlier than 8:00am

Store Hours: 11:00am – 4:00pm

NOTE: All participants of the Student Organization Store must be registered for the TOTA Annual Conference

Student organization groups may raise funds by participating in the student organization store at the TOTA Annual Conference. Although food or drinks may not be sold, other items of interest to OT practitioners are welcome.

Student Organization tables are available to only the FIRST 12 registrants.

Each registered student organization will have reserved a 6ft. skirted table and two chairs. We ask that you schedule only 2 workers at a time.

Plan to price your items competitively and arrive prepared for sales success. Consider small signs with your items/prices, a calculator, tape to attach signs to the table, pens and a receipt book and cash box/money pouch. WiFi will be available in the exhibit hall. A

rolling luggage cart may be helpful for transporting your inventory. All receipts for sales must list contact person AND email address.

Please check in at the TOTA desk in the exhibit hall so that we may direct you to your skirted table. All additional inventory must be stored out of sign under your table. Please make plans to secure your inventory after hours. Items left overnight are not guaranteed to be secure.

Cancellation: Should it become necessary for your group to cancel please notify kami@tota.org prior to the event so your space may be given to a group on the waitlist.

We look forward to welcoming you and wish you the very best at this year's TOTA Conference!

87th Legislative Wrap-Up: So Much to be Proud of and So Much More to Do

John Luna, OTR, OTD – TOTA Chair of Legislative and Political Affairs



John Luna,
OTR, OTD

The 87th legislative session came to an eventful close at the stroke of midnight on May 31, 2021. With less than ninety minutes left in the legislative session, Democrat lawmakers left the House chamber during a discussion of SB 7, denying the chamber of a quorum to conduct business. The quorum break marked the end of an unpredictable legislative session, a session marked by COVID-19 precautions, increased Capitol security, severe weather, and a lower number of completed bills. During the 87th legislative session, 9999 bills were introduced compared to 10878 in the 86th. As of June 16, only 3478 bills completed the legislative process, compared to 4484 completed during the previous session. This trend was consistent with the bills that TOTA followed. **TOTA tracked more than 156 bills, with fewer than 20 making the journey to Gov. Abbott's desk for action.**

TOTA began establishing legislative priorities for the 87th session immediately following the 86th session. At the start of the session, TOTA worked with members, practitioners, stakeholders, and our legislative consultant team to finalize priorities.

These included introducing an interstate compact license act and supporting legislation to make permanent telehealth waivers associated with service provision during the COVID-19 pandemic. So, where did we land this session?

Telehealth: TOTA tracked about 15 telehealth bills. HB 4 was a more inclusive telehealth bill. With bipartisan support and more than 80 co-authors in the house, HB 4 was signed into law on 6-15-21 effective immediately. This bill makes permanent most of the Medicaid/CHIP waivers implemented during the COVID-19 pandemic. Fiscal implications for HB 4 are unknown, as numbers reflecting future telehealth utilization across all disciplines (including occupational therapy services) are not currently available. Accompanying HB4 is SB 40. SB 40 has been enrolled and is effective as of June 3, 2021. SB 40 grants the Texas Commission for Licensing and Regulation rulemaking authority authorizing professionals to provide telehealth services within specific parameters.

Compact Act: The Interstate Compact Act HB 1903 and SB 458 received a big push from TOTA this legislative session. The act included increased practice opportunities for practitioners while increasing the safety of the consumer while not impacting TBOTE rules or practice and incurring no financial implications for the State, the consumer, or the general practitioner. HB 1903 sailed through the house with a 141-0 vote before getting stuck in traffic in the Senate Health and Human Services (HHS) Committee. The Senate HHS Committee was a sticking point for many bills this session as the committee left approximately 216 bills pending.

Despite HB 1903 and SB 458 "dying" in the Senate HHS committee, TOTA members have reason to celebrate. Telehealth waivers are extended to the extent they can be at the State level. There were no major "slides" (encroachment of practice, significant rate reductions, etc.) this session, and critical budgets, such as the Early Childhood Intervention Program budget, were passed as requested. Additionally, TOTA successfully obtained a sponsor in the House and the Senate for the licensing compact act. Not only was the bill sponsored, but the bill moved through the Public Health Committee and a House vote with unanimous support.

There will be more opportunities to facilitate change and advocate for the profession. The TOTA legislative team began planning for the interim this June. **As we gear up for the 88th legislative session, I want to encourage you to share your thoughts with us and join TOTA's current and future legislative efforts.** The theme for TOTA's Annual conference, is *Unmasking the Power of Occupation*. We can make a huge impact when we unmask the power of occupations for the groups, the populations, clients, and the causes we serve. There are tremendous opportunities for the power of occupation to shine through when we take off our masks and advocate during the 88th legislative session.

References
Legiscan (2021). Texas Legislature 2021-2022. Retrieved from <https://legiscan.com/TX>

McGinty, Jerry (2021). Fiscal Note 87th legislative regular session. Retrieved from <https://capitol.texas.gov/tlodocs/87R/fiscalnotes/pdf/HB00004F.pdf#navpanes=0>

Occupational Therapy Licensure Compact. (2020). Tool kit. Retrieved from <https://otcompact.org/toolkit/>

Price, Oliverson, Colman, Ashby, and Guillen. (2021) HB 4. Retrieved from <https://capitol.texas.gov/BillLookup/History.aspx?LegSess=87R&Bill=HB4>.

Zaffirini. (2021). SB40. Retrieved from <https://capitol.texas.gov/BillLookup/History.aspx?LegSess=87R&Bill=SB40>

Unmasking the Power of OT Through Community Partnerships

Emilie Klingman, OTR, MOT
Trinity North District Vice Chair

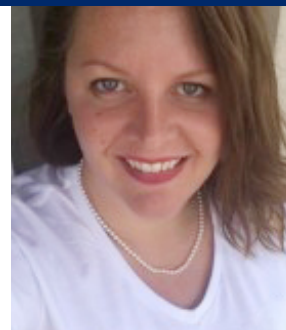
The Trinity North District Committee has been hard at work welcoming several new committee members, scheduling continuing education presenters, and planning community service events. DeAn Sellmann was appointed to our Development/Public Relations board position. Brynn Nealon, Jamie Vozenilek, and Patrice Washington were so eager to serve on our board that new positions are being created to match their passions and areas of expertise. Our new Student Representatives are Lexi Raemsch (TWU Denton), Alicia Chen (TWU Dallas), and Nicole Morgan and Stephen “Clay” Pilley (Parker University). Upcoming continuing education (CE) topics focusing on hand therapy, neuro rehab, mental health, and cognition are awaiting approval.

The Trinity North District will be participating in multiple Backpack Awareness Day events across DFW, as North Texas students prepare for a new school year. Student Occupational Therapy Association (SOTA) members from multiple universities are working to establish partnerships for this event with other SOTA programs and local schools. District members will also have the opportunity to participate in a joint backpack awareness/hygiene supplies drive in collaboration with the Children’s Health System of Texas. Other potential community service events in our district include volunteering at a local center that provides services for survivors of human rights abuses, home modifications for aging community members, and creating accessible play spaces for children with various levels of abilities. Stay tuned via tota.org, district communications, and our state social media sites for dates and details of our CE and community service events.

DISTRICT BEAT

PAC Pulse

Jennifer Summers, OTD – TOTA PAC Chair



Jennifer Summers,
OTD

Sometimes we hear acronyms in the news and in conversations and, though we feel that we should know the meaning, but we really do not. The TOTA PAC may be one of those acronyms. “PAC” simply means political action committee. As you know, one of the main benefits of TOTA is that we advocate for legislation beneficial to OT practice in Texas. TOTA collaborates with the PAC to do just that.

There are two main ways to impact legislation: 1) through the power of people (*political voice*); and 2) through the power of funds (*political investment*). TOTA’s board of directors works closely with the legislative committee on your behalf to impact state-wide policy via *political voice*. You may have been a part of these efforts by writing letters or emails, calling your representatives’ offices or attending Day at the Capitol, just to name just a few ways to exercise your political voice. These efforts show a unified message from OTs across the state for a particular legislative initiative. Advocating with TOTA is an important way to show lawmakers what is needed to do our jobs to benefit our communities.

The PAC focuses on the second type of power, political investment. The TOTA PAC is a separate organization that has its own volunteer board of directors and generates its own funding following strict governmental guidelines. The TOTA PAC accepts donations from TOTA members and uses these donations to support political campaigns for candidates who benefit the public by improving and protecting issues related to occupational therapy. By contributing PAC dollars to a candidate, we help strengthen the campaign with the hope of winning a seat in the Texas Legislature. In addition, PAC donations can also be used to support OTs and OTAs who are running for office in their communities or in a statewide election. We know that our OT perspective can have a powerful

impact on legislation and policy and the TOTA PAC is dedicated to helping OT practitioners get elected. The TOTA PAC does not consider political party affiliation as a deciding factor in selecting candidates to support. The PAC supports Republicans, Democrats, and Independents across the state.

As you can imagine, the TOTA PAC and the legislative committee work closely together. They collaborate with advancing policy and regulatory issues that are important to the OT profession and the people we serve. They both collaborate with our lobbyist who is at the Capitol every day and they form relationships with office holders and their staffs. Your Legislative committee and PAC work hard to keep OT strong and viable in Texas.

If you want to make a difference and donate to the TOTA PAC, please follow the link below. Every contribution is important. If you are already a PAC contributor and you want to learn about opportunities to volunteer, please contact Jennifer Summers, TOTA PAC Chair. You can reach her via email at jsummers7476@gmail.com.

[LEARN MORE >](#)



During the 2021 Annual Conference TOTA has partnered with Second Servings. Second Servings will pick up any unused box lunches and snacks from Friday and Saturday and distribute them in the Houston community.



About Second Servings of Houston

Second Servings is Houston's only prepared and perishable food rescue organization. Since 2015, the nonprofit has been filling stomachs, not landfills, with perfectly edible surplus food. Second Servings picks up unsold and unserved food from food businesses, such as distributors, retailers and manufacturers, and delivers it the same day, for free, to more than 90 local shelters, soup kitchens, low-income housing and many other charities. Second Servings of Houston has rescued over 5 million pounds of food, valued at more than \$50 million, from over 400 food donors and delivered it to charities in need. For more information or to make a donation, visit www.secondservingshouston.org.

FRIDAY COURSE SCHEDULE

**NOTE: longer sessions overlap shorter sessions.
Register early to secure your seat in your preferred sessions!**

TIME	TRACK 1	TRACK 2	TRACK 3	TRACK 4	TRACK 5	TRACK 6	TRACK 7	POSTERS
8:00 AM-9:45 AM	101 Adding Low Vision Services to the Generalist OT Practice 7.5 hrs 1	102 Promoting and Improving Population Health Through Occupation 7.5 hrs 2	103 Neuroscience Updates in Occupation and Adaptation; Implications for Practice 7.5 hrs 1	104 Right on your Batteries... Cognitive Mapping to Revolutionize Addressing Chronic Disorders 1.75 hrs 3	105 Incorporating Mindfulness in OT Education: What are the benefits? 1.75 hrs 4	106 Enhancing Your Practice Through Capstone Student Collaboration 1.75 hrs 5	107 Let's Talk Occupation: OT's Role in Effective Interdisciplinary Team Communication 1.75 hrs 1	108 Poster Session 1 8AM-12PM Presentations throughout the day .25 hrs. (ea)
9:45 AM-10:00 AM	BREAK							
10:00 AM-12:00 PM	101 Continued	102 Continued	103 Continued	110 Stereognosis Impairment and Astereognosis: Assessment and Intervention 2 hrs 1	111 Clinical Mentoring: How Successful Occupational Therapists Become Positive Mentors 2 hrs 5	112 The Role of Occupational Therapy in COVID-19 Recovery Within Skilled Nursing 2 hrs 1	113 Occupation-Based Holistic Treatment to Support Mental Health Recovery 2 hrs 4	
12:00 PM-1:00 PM	LUNCH IN THE EXHIBIT HALL							
1:00 PM-3:00 PM	101 Continued	102 Continued	103 Continued	114 The 2020 AOTA Ethics and Us 2 hrs 5	115 Unmasking the role of OT in Functional Neurological Symptom Disorder 2 hrs 1	116 Providing Culturally Sensitive Care in the Pediatric Population 2 hrs 6	117 Legislative Update 2 hrs	109 Poster Session 2 12-4PM 8AM-12PM Presentations throughout the day .25 hrs. (ea)
3:00 PM-4:00 PM	BREAK IN THE EXHIBIT HALL							
4:00 PM-6:00 PM	101 Continued	102 Continued	103 Continued	118 The Power of Occupation: Fieldwork Experience in Shelter for Unaccompanied Minors 2 hrs 4	119 Peripheral nerve injuries: Moving from injury to function 2 hrs 5	120 The Natural Connection between Occupational Therapy and Human-Centered Design 2 hrs 1	121 A Journey Towards Globally Connected Profession: Occupational Therapy in India 2 hrs 7	

SATURDAY COURSE SCHEDULE

**NOTE: longer sessions overlap shorter sessions.
Register early to secure your seat in your preferred sessions!**

TIME	TRACK 1	TRACK 2	TRACK 3	TRACK 4	TRACK 5	TRACK 6	TRACK 7	POSTERS	
8:00 - 9:45 AM	201 Using Constructivist Theory and a Flipped Classroom to Teach Evidence-Based Practice 1.75 hrs 5	202 Pediatric Practice with Autistic Clients - Valuing Neurodiversity over Masking 1.75 hrs 6	203 Memory Impairment: Assessment & Intervention 1.75 hrs 3	204 Powering Your Mind: The OTA Students' Mental Health Journey Through Virtual Learning 1.75 hrs 2	205 Covid-19's impact upon psychosocial well-being and daily occupations in LTCFs 1.75 hrs 3	205 Covid-19's impact upon psychosocial well-being and daily occupations in LTCFs 1.75 hrs 6	206 Unmasking the Power of Diversity in the Field of Occupational Therapy 1.75 hrs 5	208 Poster Session 1 8AM-12PM Presentations throughout the day .25 hrs. (ea)	
9:45 - 10:00 AM	BREAK								
10:00 - 11:00 AM	ANNUAL BUSINESS MEETING								
11:00 AM-12:00 PM	210 KEYNOTE ADDRESS 1 hr								
12:00 - 1:00 PM	LUNCH IN THE EXHIBIT HALL							209 Poster Session 2 12-4PM Presentations throughout the day .25 hrs. (ea)	
1:00 - 3:00 PM	211 Stroke Evaluation: Acute & Post-Acute 2 hrs 1	212 Cultural Identity: Relevance to Occupations 2 hrs 5	213 Occupational Therapy for Balance Rehabilitation: background and Practical Strategies 4 hrs 1	214 Performance Assessment of Self-Care Skills: Mini Workshop 4 hrs 1	215 Going Beyond Functional Performance for Successful Aging in Place 2 hrs 3	215 Going Beyond Functional Performance for Successful Aging in Place 2 hrs 6	217 Community Mental Health Practice in Texas; Getting Down to Brass Tacks 2 hrs 4		218 Research Forum 1-2:30PM .25 hr each topic
3:00 - 4:00 PM	BREAK IN THE EXHIBIT HALL								
4:00 - 6:00 PM	219 Flying Drone: Unmasking the Power of Emerging Innovative Occupation 2 hrs 1	220 Trauma, Stress, and Resilience: Implications for OT 2 hrs 4	213 Continued	214 Continued	221 21 Day Advocacy Habit for Occupational Therapy Practitioners: Leveling Up 2 hrs 5	222 Power of Community Engagement at the Student Level: Developing Essential Skills 2 hrs 1	223 What is the Doctoral Capstone and How Can It Advance My Practice? 2 hrs 5	224 Wisdom and Wine 4-6:00PM 1 hr 7	

COURSES:	301 ▶ Promoting Occupational Justice in Occupational Therapy Fieldwork 1.75 hrs 5	302 ▶ Handwriting and MTSS. Embed. Collaborate. PARTICIPATE. Graduate! 1.75 hrs 6	303 ▶ Adapting Educational and Play Activities for Children with Physical Disabilities 1.75 hrs 6	304 ▶ Successful Clinical Documentation in a PDPM World 1.75 hrs 3	305 ▶ Treatment of Intrinsic and Extrinsic Imbalance 1.75 hrs 1	306 ▶ Revealing the genius in everyday occupational therapy practice 1.75 hrs 2
	307 ▶ Unmasking the Power of Occupational Therapy with Lifestyle Medicine: Teachable Moments 1.75 hrs 1	308 ▶ Fostering Experiential Learning and Collaboration via Interactive Simulations 1.75 hrs 5	309 ▶ Cancer survivorship programs in the US and Israel; an International Exchange 1.75 hrs 1	311 ▶ Competency-Based Education Activities for Occupational Therapy Students 1.75 hrs 5	311 ▶ The Power of Resilience for Reengagement in Occupation 1.75 hrs 4	
312 POSTERS:	Occupational therapy and occupational therapy assistant collaboration in academia Mentorship: An Opportunity Beyond the Traditional Educational Experience What is Trauma-informed care? Teaching and Learning about Trauma for OT Practice Using Lexiles and Universal Design for Learning to Create Client Education Materials Strategies for Developing Workshop and Training Materials for Partners with ASD Stakeholder Perceptions on San Antonio Foster Youth Work Outcomes Learning within a New Emerging Practice FW II for those Impacted by Domestic Violence					